



Draft
Newstead Community Plan 2013

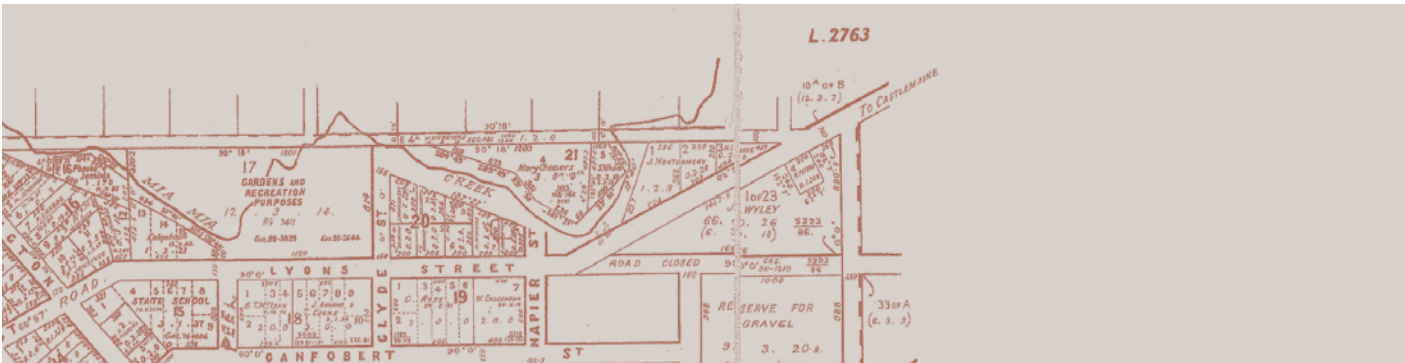


NEWSTEAD NEEDS?

NEWSTEAD
COMMUNITY
PLAN

Contents

EXECUTIVE SUMMARY	3
INTRODUCTION	4
Why are we planning?	4
NEWSTEAD OVERVIEW	5
Where, what and who we are	5
Our Planning History	10
COMMUNITY ENGAGEMENT – WHAT WE DID	11
Community involvement	11
The planning day	12
CONSULTATION RESULTS – WHAT WE FOUND	14
Our values	14
Our challenges	16
Our aspirations	18
STRATEGIES AND ACTIONS – WHERE TO NEXT?	19
Open spaces	19
Dollars and cents	20
Community life	21
Bricks and mortar	22
Working out our priorities	24
How our plan fits regional, State and Federal contexts	25
NEXT STEPS	26
ACKNOWLEDGEMENTS	27
APPENDICES	27
A. List of Newstead community groups	28
B. Notes on socio-economic indexes for Newstead	29
C. Engagement plan diagram	30
D. Values information table/chart and full listing	31
E. Community planning day flyers	37
F. Consultation results – full listing	38
G. Planning day program	49
H. Assessment approach for ideas and suggestions	52
I. Newstead Echo insert – sample	55



Our town, our say



Executive Summary

This is the draft Newstead Community Plan.

Newstead is a diverse, creative and cohesive community with a steadily growing population, an abundance of natural and built resources. We value our rich history and village atmosphere and have a high level of community participation and volunteerism.

The locals are also keen to have a say in the future of their town. We estimate one in four of us has been actively engaged in the plan's development to date.

The Newstead Community Plan identifies four areas of focus. They are:

Open Spaces

Dollars and Cents

Community Life

Bricks and Mortar

For each of these themes we have identified our aspirations, together with a set of objectives and strategies (often in the form of specific projects at different scales) to be realised.

At this stage the plan suggests a set of major projects:

1. Refurbishing and revitalising the **Newstead Railway Station** as an **arts precinct**.
2. Creating a **pedestrian bridge** across the **Loddon River** to connect both sides of town.
3. Establishing a **skate and bike park and playground** for the younger members of our community.
4. Establishing a connected network of **walking and bike paths** and trails between Newstead and surrounding towns, using existing easements and bushland areas.
5. A major renewal of street trees within the town precinct
6. Establishing a **Sustaining Volunteers Initiative** to support volunteers and community groups.

A longer list of projects, some large, others small has been detailed in the section on STRATEGIES and ACTIONS.

At this stage all projects are 'on the table'.

The next step is to take this draft plan back to the community and seek input to identify and affirm priorities, examine their feasibility and resourcing, clarify responsibilities and start making the ideas a reality. Your feedback and other criteria, including community benefit, risk and feasibility will help us do this.

We would like to acknowledge that Newstead is part of Jaara Country of which the members and elders of the Jaara community and their forebears have been custodians for many centuries and have performed age old ceremonies of celebration, initiation and renewal. We acknowledge their living culture and their unique role in the life of this region.

Introduction

WHY ARE WE PLANNING?

The Newstead Community Plan is part of the Mount Alexander Shire Local Community Planning Project, funded by the Victorian Government to create nine local Community Action Plans over three years. Communities involved to date are Chewton, Elphinstone, Guildford, Harcourt and Taradale. Other small communities throughout Victoria are also engaged in community planning under this State Government program.

In Mount Alexander Shire, the council is running the planning process in all towns except Newstead. Here a group of local volunteers has led the process, believing a locally produced plan will better reflect community needs and draw on local knowledge, skills and expertise. We also ran the last major community planning event, the 2008 Newstead 2021 Summit.

The Newstead Community Plan aims to assist Newstead to plan, prepare and respond for the future (2021 and beyond).

The final Newstead Community Plan:

1. Provides a snapshot of our community's shared values, aspirations and needs,
2. Revisits and build on plans, objectives and outcomes from the 2008 Newstead 2021 Summit and identifies new community perspectives and ideas,
3. Outlines how our community might achieve its plans and objectives, sets priorities for future community action, and will identify roles and responsibilities,
4. Improves social connections and communication across our community,
5. Gives us influence, a strong voice and a common frame of reference when working with local government and other bodies.

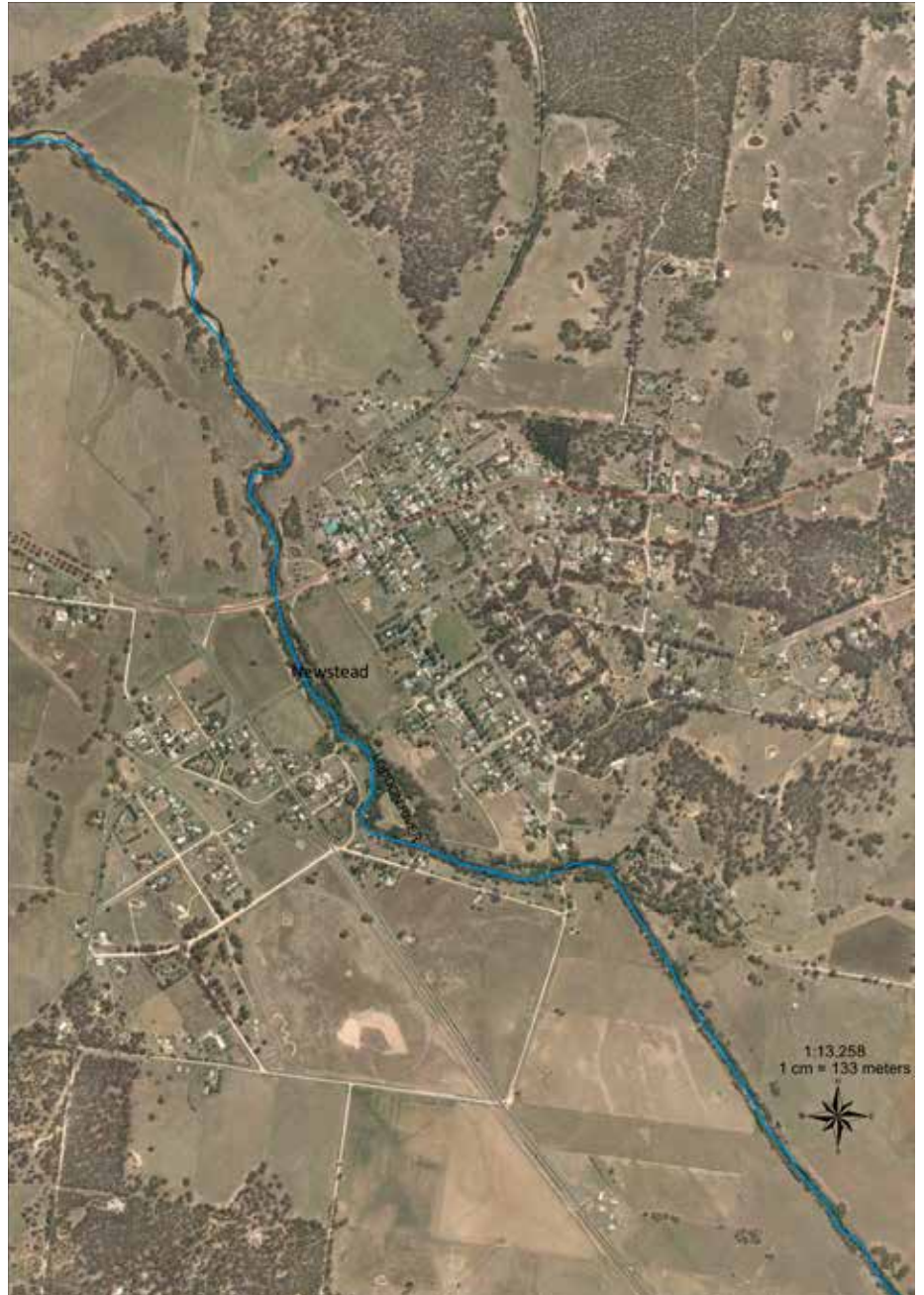
This plan acknowledges and aims to build on all that has gone before. Gathering input and ideas from as many people and groups as possible, we want to produce 'whole of community' plan for Newstead that reflects recent change and looks to the future.



Newstead – an overview

WHERE WE ARE

Newstead is an old river crossing town in Jaara country on the banks of the Loddon River, about 150km, or 1.5 hours' drive by car from Melbourne. The town spreads across both sides of the river and is in Mount Alexander Shire. Nearby larger towns are Castlemaine (home to the shire headquarters) and Maldon, both about 15 minutes by car away, and Daylesford, about 25 minutes by car. Newstead is in the Loddon catchment, immediately upstream of the Cairn Curran Reservoir, and is in the area covered by the Loddon Mallee South Regional Growth Plan. It's surrounded by bush and farmland and the settlements of Welshmans Reef, Werona, Clydesdale, Strangways, Sandon, Strathlea, Joyce's Creek, Green Gully, Yapeen and Yandoit, whose residents are very much part of Newstead community life. Formal Census borders are irrelevant when it comes to work and play. Certainly borders didn't matter when it came to developing this community plan. Residents from all these areas took part and their ideas are infused throughout this document.



WHAT'S HERE?

A supermarket, a seven-day a week milk bar, a café/restaurant, butcher, two pubs, a motel, bed and breakfast accommodation, a second-hand antiques shop, a police station and a Rural Transaction Centre, which houses a laundry, library, local community bank, gallery, childcare service, opportunity shop and booking service for the local community hall and community bus, make up the local street frontage business life of this community but much is hidden. Scattered throughout the community are home-based businesses and consultancies ranging from farming (sheep, grain, cattle, vineyards, industrial scale chicken and honey) enterprises, allied health practitioners (shiatsu, massage etc), management and road planning consultants, scientists, graphic artists, IT specialists, writers, musicians, artists and other professionals. We have gardeners, a native plant nursery, a small arborist and tree management business, a hairdresser, a transport company, painters, builders and an electrician.

Two magazines – one online and another, on paper – with national circulation are produced here. Artists and musicians abound in number and diversity of creative pursuits. Our recent submission to Regional Arts Victoria, for funding to create an Arts Hub at the Newstead Railway Station identified 10% of our community as practising artists!

We have a pre-school (20 children), primary school (63 children), a playground, a sporting oval (home to 12 netball, football teams), volunteer-run sporting clubs, fire brigade, swimming pool, men's shed and community garden. An old racecourse accommodates small and large scale events, offering good camping and cooking areas and toilet facilities. Some surrounding communities also have churches and halls. There are many notable public and privately owned buildings listed on a heritage overlay.

The town hosts:

- Newstead Live music festival held annually in January
- Newstead Short Story Tattoo held every two years in May
- Newstead Chopped Rod and Custom Show held annually in October
- Newstead Automotive Swap Meet held annually in February
- The British Bike Rally conducted annually in April

Newstead has always been distinguished by a large number of active community groups (See list in Appendix A), from croquet to footy to scrapbooking to Landcare. Our Historical Society keeps the community's rich legacy and valuable archives. Our Swimming Pool is seen as a model for volunteer run and managed facilities. The Newstead Echo continues its 117 year newsprint run, in its current monthly guise since 1978. Our RTC is staffed and run by a team of 45 volunteers. Not surprisingly there is a high level of volunteerism (the latest ABS Census suggests 34.4 per cent, compared with 17.7 per cent in Victoria and 17.8 per cent in Australia) with many community members involved in multiple groups.



WHO ARE WE?

The 2011 Census gives us some clues on this. In the area deemed a state suburb by the Census, which includes some but not all the settlements listed on page 4, there are 802 people, more males (424) than females (378) and the average age is 50.

We are, largely, of Anglo-Saxon descent and most of us (82.6 per cent) were born in Australia and speak English at home. Just four males are Aboriginal or Torres Strait Islanders. Also, we are

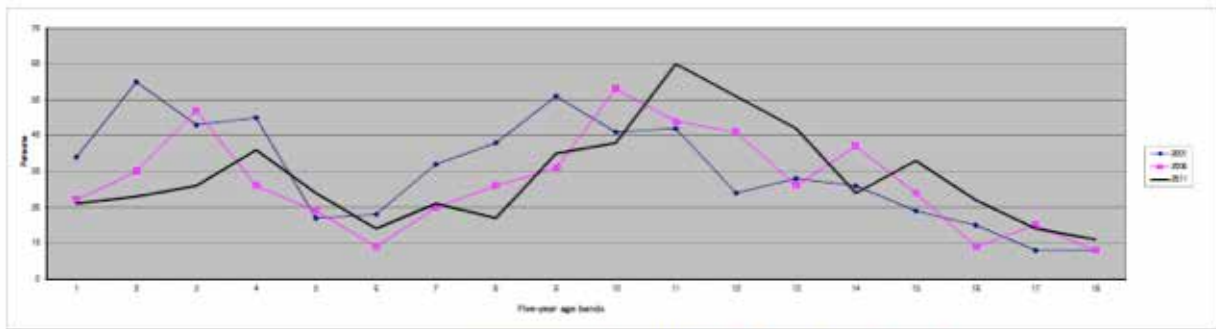
largely irreligious with 36 per cent of us declaring we have no religion. That's heaps more than Victorians, on average 24 per cent, and Australians, 22.3 per cent.

We have 1.9 kids and 1.9 cars for every family and 55-to-59 year olds are the biggest age bracket, comprising 11.7 per cent of the population. The number of young people rises through the years up to 19 years of age but then tends to fall as our kids leave home. There

are more people again aged 40 and upwards. Almost one-fifth, 19 per cent, of the population is aged 65 years or over. More than half of us aren't married i.e. we're separated, divorced, widowed or we've never married. Just seven per cent of us are university or tertiary educated against the state average of 15.2 per cent. Most of us who are currently getting educated are at primary school.

Newstead's changing age profile: 2001-2011

Newstead	Aged 0-4 Persons		Aged 5-9 Persons		Aged 10-14 Persons		Aged 15-19 Persons		Aged 20-24 Persons		Aged 25-29 Persons		Aged 30-34 Persons		Aged 35-39 Persons		Aged 40-44 Persons		Aged 45-49 Persons		Aged 50-54 Persons		Aged 55-59 Persons		Aged 60-64 Persons		Aged 65-69 Persons		Aged 70-74 Persons		Aged 75-79 Persons		Aged 80-84 Persons		Aged 85+ Persons		Total Persons	
	2001	2011	2001	2011	2001	2011	2001	2011	2001	2011	2001	2011	2001	2011	2001	2011	2001	2011	2001	2011	2001	2011	2001	2011	2001	2011	2001	2011	2001	2011	2001	2011	2001	2011	2001	2011		
UCL2014001	22	22	30	23	47	35	45	17	19	9	20	26	31	33	44	41	41	25	27	34	9	18	8	8	8	8	8	8	8	8	8	8	8	8	8	8	8	482
UCL201856	21	21	23	26	36	24	14	14	21	17	26	35	38	60	51	42	24	30	22	18	11	11	11	11	11	11	11	11	11	11	11	11	11	11	11	11	11	812



Newstead age profile comparisons 2001 to 2011 - All person numbers in five-year age bands

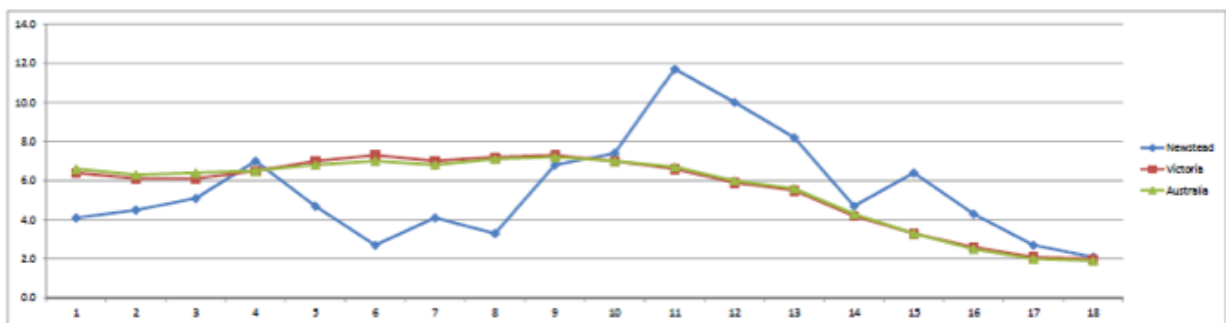
- Observations:
1. Decline in number of persons less than 14 years from 2001 to 2011.
 2. Big dip in age profile for Newstead between 20 and 30 years.
 3. Increase in numbers 60 to 64 years from 2001 to 2011.
 4. Big hump in age profile 50 and over.

Source: (Prepared by HCL) 14/01/11 from ABS data

Source: compiled from 2001, 2006 & 2011 Census data, ABS, by Ray Culvenor

Newstead's age profile compared with Victoria and Australia: 2011

AGE Band ->	1	2	3	4	5	6	7	8	9	10	11	12	13	14	15	16	17	18
	Aged_0_4 Persons	Aged_5_9 Persons	Aged_10_14 Persons	Aged_15_19 Persons	Aged_20_24 Persons	Aged_25_29 Persons	Aged_30_34 Persons	Aged_35_39 Persons	Aged_40_44 Persons	Aged_45_49 Persons	Aged_50_54 Persons	Aged_55_59 Persons	Aged_60_64 Persons	Aged_65_69 Persons	Aged_70_74 Persons	Aged_75_79 Persons	Aged_80_84 Persons	Aged_85+ Persons
Newstead %	4.1	4.5	5.1	7.0	4.7	2.7	4.1	3.3	6.8	7.4	11.7	10.0	8.2	4.7	6.4	4.3	2.7	2.1
Victoria %	6.4	6.1	6.1	6.5	7.0	7.3	7.0	7.2	7.3	7.0	6.6	5.9	5.5	4.2	3.3	2.6	2.1	2.0
Australia %	6.6	6.3	6.4	6.5	6.8	7.0	6.8	7.1	7.2	7.0	6.7	6.0	5.6	4.3	3.3	2.5	2.0	1.9



Comparison of age-band (all persons) percentages - Newstead, Victoria, Australia - 2011 Census

- Observations:
1. Lower proportion in Newstead between ages 20 to 39.
 2. Higher proportion in Newstead for aged 50 and over.

Source: Compiled from 2011 Census data, ABS by Ray Culvenor

Newstead – an overview (cont')

More than half of us work full-time (51.3 per cent) but we also have a lot of part-timers (38.7 per cent) and our unemployment rate, at 4.9 per cent, is below the state (5.4 per cent) and national (5.6 per cent) averages. Of our workers, many are professionals and farming is a comparatively large employer. Indeed we have many more people employed in farming (7.4 per cent) than does Victoria (0.9 per cent) and Australia (1.2 per cent). We earn less than Victorians and Australians on average but we do more volunteer work. We mostly travel by car and live in houses, not flat, units or townhouses and almost half (46.7 per cent) the occupied houses are owned outright. We have more people living alone (35.7 per cent of households) compared with Victoria (24.5 per cent) and Australia (24.3 per cent) on average.

Newstead has always been distinguished by a large number of active community groups (See list in Appendix A), from croquet to footy to scrapbooking to Landcare. Not surprisingly, there is a high level of volunteerism (confirmed by Census data) with many community members involved in multiple groups.

HOW ADVANTAGED ARE WE?

The town of Newstead is more disadvantaged socio-economically than almost 70 per cent of Australia, most of the rest of Mount Alexander Shire and even the area immediately surrounding it. From 2006 to 2011 this disadvantage reduced.

A tool for measuring advantage and disadvantage, the Index of Relative Socio-Economic Advantage and Disadvantage (IRSAD), tells us this. It summarises the economic and social conditions of people and households in different areas. The town's IRSAD score for example is 927, below Mount Alexander Shire's on 970 and Maldon's on 965. Yet pockets immediately surrounding Newstead such as Sandon/Werona (994) Welshmans Reef (964) and Joyce's Creek/Strangways (989) are somewhat higher.

None of this takes into account the beautiful bushland and bird and animal life that surrounds us, nor the fact that volunteerism, albeit increasingly under pressure, is strong.

[Note: A detailed tabulation and analysis of socio-economic data developed by Ray Culvenor can be found at Appendix B]

So what's to conclude from all this data?

One might say we're a white, not very middle class, irreligious, bunch of oldies who don't earn much but volunteer lots, however, remember that this data doesn't include all of us.

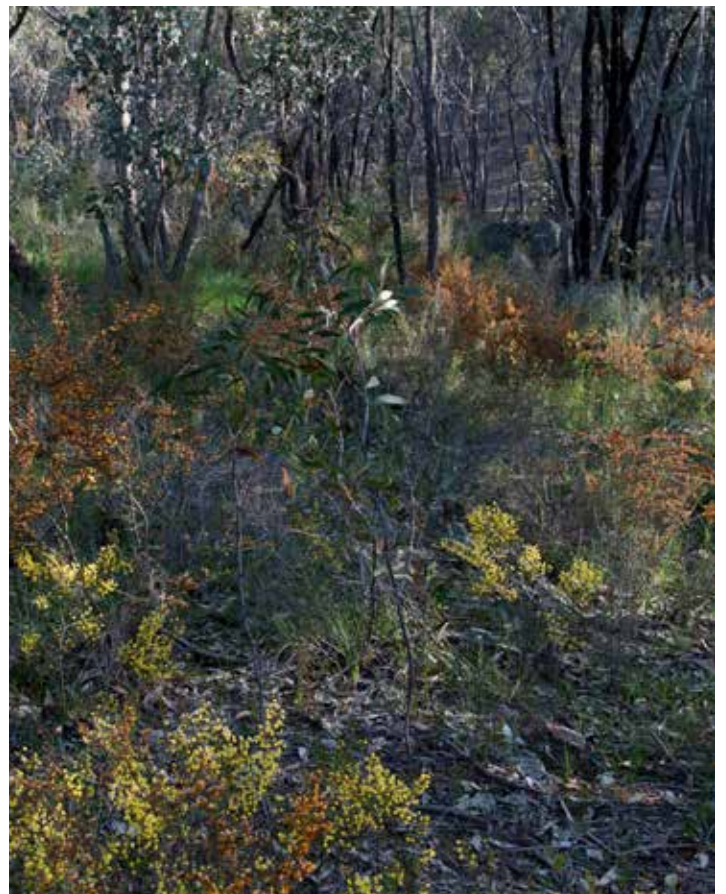


OUR LOCAL ENVIRONMENT

Newstead is located in a unique ecological setting. It is nestled at the boundary of three distinct bioregions, the Goldfields, Victorian Volcanic Plain and Central Victorian Uplands. The local area features very different landscapes with forests, woodlands and plains country. The region is rich with flora and fauna – for example 213 different bird species are recorded locally.

The Loddon River, which rises in the highlands over the Great Dividing Range, near Trentham, is fundamental to our sense of landscape and place. Its floodwaters have regularly threatened the town. The river has always been a focal point for recreation with a rich history of agriculture and gold-dredging on the Loddon floodplain. In recent decades the Loddon River has regenerated remarkably following a history of prior disturbance.

Within the local district there are a number of significant environmental features, including Muckleford Nature Conservation Reserve, Muckleford and Sandon State Forests, the wetlands of the Moolort Plains and Cairn Curran Reservoir, in addition to our precious Loddon River. Small areas of public land such as the Rise and Shine Bushland Reserve are a focus of our local Landcare work and provide important areas for passive recreation. Private landholders, including the farming community, play an important role as custodians of biodiversity and there is a significant area of land under voluntary conservation agreements, including Land for Wildlife properties and Trust for Nature covenants. The Muckleford Gorge, located on private land on the Muckleford Creek, just upstream of its confluence with the Loddon River, is of major geological, landscape and ecological significance.



OUR PLANNING HISTORY

Before European settlement, the area was home to the Jaara people who used the rich plant and animal resources of the district to sustain their economy, cultural and spiritual activities.

Major Thomas Mitchell and his party were the first European explorers to visit the region in 1836. They passed close to where Newstead is today, crossing the Loddon River on September 27, 1836.

“At length, we entered on a very level and extensive flat, exceedingly green, and resembling an English park. It was bounded on the east by a small river flowing to the north-west, (probably the Loddon), and abrupt but grassy slopes arose beyond its right bank ... Sheltered on every side by woods or higher ground, the spring seemed more advanced here than elsewhere, and our hard wrought cattle well deserved to browse on that verdant plain. The stream, in its course downwards, vanished among grassy hills to water a country apparently of the most interesting and valuable character”.

– From the Diary of Major Thomas Mitchell.

Sheep farming, gold mining, river dredging and other farming and business pursuits followed. At least since settlement, the area has a history of formally determining and planning for its own facilities and community life. The Shire of Newstead was formally declared in 1865. It amalgamated with Mount Alexander Shire in 1915, split off again in 1949 and re-amalgamated in 1996.

In the early 2000s the town began to be sewerred, which enabled more intensive housing development. Many residential areas have since been subdivided and new houses are springing up, mostly on the eastern side of the river.

In recent decades formal community planning efforts have included workshops with community development specialist Peter Kenyon (mid 1990s), the Newstead Forum, the Newstead Taskforce, the Newstead 2021 Summit (2008), Focus on Newstead (2012) and more recently, of course, in 2013 the development of this community plan.

The 2008 summit resulted in the establishment of a new community garden, a wi-fi service for the CBD, a plan for Loddon River, restoration activities, a town website and a new pirate ship playground. It led to the introduction of reduced speed limits through town and an audit of street trees. ‘Newstead 2021’, an ongoing community group, was incorporated as an umbrella organisation to support and assist other community projects and “Rocket Science” sessions at Dig Cafe continued the conversations.

[Insert some images from the 2008 Summit]

[Newstead Echo 100years ago excerpt]

[Insert Focus on Newstead image]

Community engagement – what we did

In 2012 an informal planning group of locals with Mount Alexander Shire's financial and moral support, appointed local Janet Barker to help develop this plan.

It was no accident that the focus of this planning process was about conversation – from the logo, 'Our Town, Our Say', to the 'talking points kit' for focus groups, we sought to encourage a community conversation about the future of our town and community.

COMMUNITY INVOLVEMENT

Between November 2012 and March 2013, the planning group consulted widely to gather thoughts and ideas from the community in the lead up to the Community Planning Day on March 3, 2013. We used:

Print and Post

- "My gift to Newstead" Christmas postcard campaign – 68 responses
- Newstead Echo insert and question/prompter – 19 responses

Face to Face

- Newstead Kids – classroom session and postcards – 58 responses
- Attending meetings of existing community groups
- Attending community-wide events
- Focus group with newcomers
- Focus group with small business owners
- Focus group with artists

- Focus group with Green Gully fireguard group
- Focus group with farmers
- Focus group with carers
- Interviews and discussions with individuals
- Presence at RTC for 4 hrs/week (over 2 days)

Internet

- Web-based survey – 17 responses
- Dedicated website/blog and Facebook Page – 98 responses

Other

- Roving blackboards/graffiti boards at community events/sites – 45 responses
- Display at RTC

Consultation was designed to be deep and broad. An estimated 3000 hours of volunteer time between November 2012 and March 2013, generated a huge amount of data and responses from our local community.

[See Appendix C for Engagement plan diagram and Appendix F for a summary of the results]

SUMMARY TABLE OF ENGAGEMENT METHODS AND RESPONSES

Method	No. of ideas*	No. respondents**
Person to Person^	197	100
Post Cards	75	68
Primary School Post Cards	113	58
Website blog	18	20
Focus on Newstead	12	30
Survey	117	17
Echo	28	19
Blackboard	45	45
Facebook	28	78
RTC Display	1	4
Total	634	439**

^ *inc. focus groups, interviews, personal contact, events, etc*

* *single ideas raised*

** *some respondents provided ideas via more than one method and more than one idea*

"really good conversations = really good engagement = really good results"

Community engagement – what we did (cont')

We asked what people valued about Newstead, what they saw as the main challenges or needs and how they would like Newstead to be in the future. We also asked people to consider how they might contribute to that picture.

Despite the timing (leading into Christmas and the school holidays over January) and rescheduling the planning day, the many opportunities for input engaged a broad cross section of the community and yielded more than 620 responses. On the planning day another 100+ were added.

The number and scope of responses reflects the intent of the engagement plan. Participants were encouraged to think broadly, not led by previous planning or closed/limited questioning.

We estimate at least one in four locals has been engaged in the plan's development. Between 150 and 200 people were engaged in the planning process before March 3 (a conservative estimate because some respondents gave several ideas and used more than one method). One hundred people attended the planning day - over half of them had not been involved in any community planning activities beforehand. We can confidently say that more than 200 people have been involved in the planning process to date.

THE PLANNING DAY

All value statements and responses were collated leading up to the planning day. The responses were grouped into four categories – 'Open Spaces', 'Bricks and Mortar', 'Dollars and Cents' and 'Community Life'. These themes formed the basis to prompt small group discussions on March 3. A fifth "Open" category was added on the day to avoid narrowing the focus.

The day began with a 'mapping exercise' where participants identified the places, spaces and projects important to them. A 'storytelling' session followed with individuals from key groups, businesses and sites in Newstead providing a snapshot or vignette.

(See planning day program in Appendix G.)

Group discussions centered around the ideas on display for each category and three questions were asked:

- **'What's your response or reaction?'** – to the ideas already gathered during the engagement phase
- **'What's missing?'** – to include any new ideas
- **'What do we need to do to progress the ideas?'** – to develop and expand the conversations

Participants could take part in three brief (20 minute) discussions across the categories. Afterwards selected three projects or ideas that they supported (i.e. should definitely be included in the community plan) and two projects they wanted to help make happen (i.e. prepared to contribute or assist in some capacity). This allowed us to gauge support for specific ideas and also the level of potential action around them.



Community engagement – what we did (cont')

WHAT WE LEARNT FROM THE ENGAGEMENT PROCESS

- Using many different methods to engage people worked better than using a single approach, say just having a public meeting alone
- Newstead locals prefer face to face contact (and more creative ways of engaging)
- Surveys had limited return rates but yielded valuable information (fewer than 20 responses gave more than 100 ideas)
- Focus groups served a dual purpose; an opportunity to meet and discuss issues of common interest and for social connection, especially for businesses and newcomers
- Younger people responded enthusiastically via postcards and the blackboard at the pool
- Working with the primary school was vital for two major reasons. One, it emphasised to the kids that they can influence change. Two, we involved the generation most likely to be affected by this plan
- Meeting people and groups where they gather, connect and converse is just as important (and can be more effective) as creating new opportunities and activities
- A set time and place for consultation, based in the community (the RTC) provided two-way benefit and an effective way for locals to own and access the project
- Involving the broader N2021 steering group to spread the word and the workload helped reach diverse strands in the community
- The value of using local expertise and skills in designing and implementing community plans can't be underestimated



Consultation results – what we found

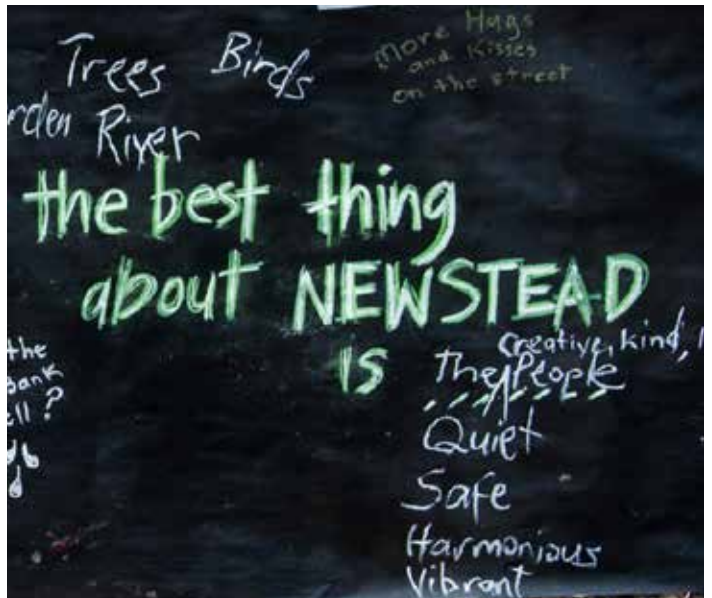
OUR VALUES

Newstead people value the town's village and small rural town feel, its heritage and history, the quietness, the natural environment and open spaces, the good communication and links between groups and individuals, the strong and active community, its facilities and services, its creativity, and the friendly and inclusive feel.

Over 200 recorded values were grouped into these categories: People, Community Spirit, Connections, Community Groups, Facilities and Events, Physical attributes, Natural Attributes, Spirit of Place, Heritage and Legacy.

Newstead's physical attributes ranked highest (22%), closely followed by its facilities and events (20%), community spirit (16%) and natural attributes (15%).

[See Appendix D for this information]



CONNECTIONS:

“people know and help one another” ... “friendly support network” ... “able to have input into community life” ... “access to council through our local representative Michael R” ... “relationships” ...

COMMUNITY SPIRIT:

“the possibilities and positiveness” ... “the determination of the community” ... “positive community, engaged, creative and creating” ... “sense of heart in the town” ... “inclusive, allowing” ... “confidence, people doing their own thing, quiet achievement” ... “people care about each other and sustainability” ... “go ahead ideas for a small place” ... “safe” ... “friendly” ... “a community ethic of participation and volunteerism” ... “nurtures a culture that values community cooperation and shared activities and beauty” ... “welcoming” ... “Newsteadians value ‘community’” ... “capacity to pull together to achieve things” ...

FACILITIES AND EVENTS:

“Echo is a community treasure” ... “services and places for kids – preschool, school, pool, playground” ... “supermarket, Post Office, RTC, bank, pub, cafe, laundry, swimming pool” ... “music” ... “wireless connection” ... “what it offers for a town of its size” ... “butcher” ... “facilities and services you need to live without a car – grocer, bank, school, PO” ... “community centre classes, RTC, wireless, community garden, Echo, local businesses” ... “pub, dig” ... “the level of skills and expertise, from professional through to trades and services” ... “V-Line bus” ...

COMMUNITY GROUPS:

“the camaraderie of groups” ... “strength and variety of interest groups” ... “all the community groups – the most community groups in Australia? – achieving tangible things” ... “people get involved in things they like doing” ... “wide range of cultural activity” ...

HERITAGE AND LEGACY:

“the old buildings” ... “heritage and historic buildings being used as businesses” ... “lack of change” ... “the way the community treasures its history” ... “The layers of history – gold and now, European trees and gum trees, peeling back things, the old and new people; the old farmers are the most tolerant cockies I’ve ever come across and I know how un-inclusive they can be” ...

NATURAL ATTRIBUTES:

“the river and the environment surrounding town” ... “the seasons – autumn, winter, spring” ... “the big, big sky” ... “open spaces and access to nature” ... “space and peace of rural woodlands” ... “walks and birdlife” ... “the river is a defining feature” ... “the ancient river redgums, magic, even without water” ...

PEOPLE:

“the people are fabulous, tolerant” ... “the ‘x factor’ – misfits, eccentrics, independence of individuals; not a homogenous community” ... “rural families” ... “interesting and committed people” ... “influx of new people and ideas” ... “you can talk to anyone, interesting people – scratch beneath the surface and we have amazing talented people, but they are ordinary” ... “diverse population mix – ages, interests, skill-sets” ... “artists and musicians” ...

PHYSICAL ATTRIBUTES:

“it is a village, not a town” ... “proximity to larger centres” ... “the main street” ... “the elm trees” ... “space” ... “close to Melbourne but a small town feel” ... “the highway keeps people coming through – good for business” ... “able to work from home” ... “close to work and family” ... “picturesque township and shade trees” ... “wide streets and trees” ... “size of houses and space of blocks” ... “big enough to have school and businesses, services, facilities but small enough that people need to volunteer and contribute/participate to get things done” ... “the smaller outlying localities and sense of community” ...

SPIRIT OF PLACE:

“the ‘feel’, the spirit of the place” ... “the country atmosphere” ... “safe” ... “an easy place to be by yourself” ... “peace and quiet” ... “great place for kids to grow up, secure and grounding” ... “good energy” ... “the time and the mental isolation and mental space to be an artist”

OUR CHALLENGES

The planning process focused on finding out what people saw as Newstead's current and future needs. Implicit in this and underlying the responses was that Newstead cannot afford to stand still and let change roll over us.

The challenges facing Newstead are no different to those facing other small rural towns in Victoria and further afield. However local values mean that some challenges are more pressing or specific to our community. Managing growth and development whilst preserving the spirit and sense of place, and maintaining our ethic of caring and volunteerism are examples.

Some saw the challenges as very close to home – noisy neighbours, gutters and road grading, having access to water or petrol, time to spend with friends and family, places to play. For others the challenges were local – being able to travel on public transport, knowing where to go in bushfire threat, making an income, growing old here. Some saw broader, global issues the most crucial – climate change, economic and social restructure, and having input into government decision making.

The draft plan attempts to reflect and address all these views, small and large, singular and complex. The challenges were:

Open Spaces

Protecting our natural environmental assets and open spaces

Accommodating population growth in ecologically sensitive and fire prone environment, esp. in surrounding areas of township

Bricks and Mortar

Streetscaping and urban planning and development that is in keeping with the sense of space/place

Insufficient suitable low energy housing, especially for people as they age

Providing support for increasingly aging population of farmers and townspeople and enabling them to stay in Newstead rather than into supported/care in larger centres

Bushfire safety

Affordability of housing as population grows being balanced with liveability and social connections

Dollars and Cents

Planning for higher energy and resources costs in the future and to provide alternatives.

Can Newstead provide employment/income opportunities beyond butcher, baker, etc.

Choice and access to businesses and services (food, fuel, etc) that larger centres have

The world economy and how it is affecting jobs. Living in a small town does mean fewer options for work. We need as a family to look at how we will balance the lifestyle benefits of living in Newstead with how to earn a viable income.

Generating a sustainable income from my property/farm.

Sustainability as a community; food, water, waste, energy, communications

Community Life

Being overwhelmed by the growth anticipated by being labeled either a dormitory/satellite town or a self-starter & go-getter town.

How do we keep our values and the things we love about the place yet embrace the future?

At a more personal level - giving friendships and relationships the attention they deserve

Increasing demands, time constraints – a small community is very dependent on volunteers and while this is a wonderful opportunity to meet new people, develop and broaden one's skills and interests, it is also time consuming and can be exploitative of small communities in that it means there is a lot of responsibility resting on fewer shoulders.

Continuing to attract new people with ideas and energy

Decision making at a distance - ensuring community has input into policy and decisions that affect them

PUTTING IT IN CONTEXT – NEWSTEAD IN THE BIGGER PICTURE

The South Loddon Mallee Regional Strategy (Regional Development Australia, Loddon Mallee) recognises that “small towns and villages (like Newstead) play an essential role in the function and character of the region. Many have significant historic or landscape value and offer an alternative lifestyle from the more urbanised and larger centres. Supporting the diversification of the economy of these (and other) small towns is important, as is maintaining social infrastructure and services.”

The Strategy re-iterates the challenges that Newstead people see as important, including:

- Investing in liveability, infrastructure and urban design initiatives to make our towns great places to live.
- Building community connectedness and reduce areas of social disadvantage.
- Providing appropriate housing and services for an ageing population is a challenge that needs to be managed.

- Managing growth within a naturally hazardous landscape, particularly when considering flood and bushfire risk and adapting to the potential impacts of changing climate.
- Attracting and maintaining younger age groups for both education and further employment will be critical to maintaining community diversity and a vital economy.
- Providing infrastructure and protecting assets are critical to achieving and managing growth. Providing safe drinking water is essential and the quality of water sources has a major impact on human health. Protecting the health of catchments is important to ensure the region has safe and adequate water supplies.
- Managing growth so that it does not overwhelm the social attributes that are attracting growth and in a way that protects the environmental assets and natural resources of the region.

The Loddon Mallee South Regional Growth Plan Draft (Department of Planning and Community Development) highlights that the region (of which Newstead is a part) has experienced, and is expected to continue to experience, strong population and economic growth over the coming decade. Specifically it notes that in the next 30 years Bendigo is anticipated to increase in population to something approaching 200,000 people.

Over the next 20 years it is highly likely that Newstead will experience moderate growth in population and will welcome a diversity of new residents from a broad range of cultural backgrounds.

Consultation results – what we found (cont')

OUR ASPIRATIONS

A great number and diversity of ideas were raised during the consultation phase. These ideas were grouped under four themes.

Open Spaces – 182 ideas

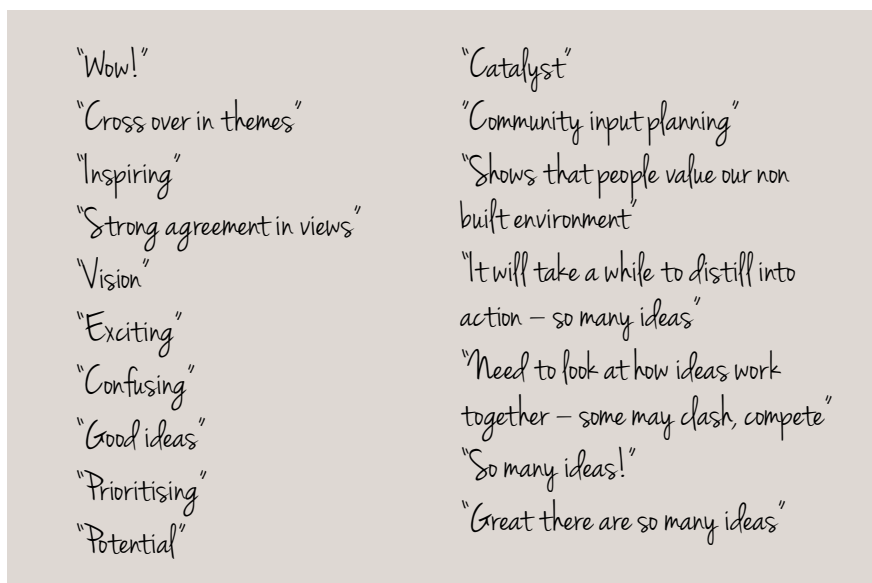
Dollars and Cents – 161 ideas

Community Life - 170 ideas

Bricks and Mortar - 173 ideas

On the planning day, these ideas were refined or expanded and more ideas were added by the 100 participants.

The day itself was a terrific success and elicited some diverse responses from participants.



We have used four themes to classify our aspirations and objectives. Obviously some cut across themes; an idea may encompass more than one theme and vice-versa. But we found this the most workable way to develop our plan.

Open Spaces	Dollars & Cents	Community Life	Bricks and Mortar
WE SEEK/ASPIRE TO:			
Shade, gathering spaces, connectivity and a healthy natural environment around our streets, bushland and river	An economically sustainable, job rich community with strong transport and IT links, powered by low-cost, renewable energy	A healthy, creative community where people look out for each other. We work and play together, connect and share differences and talents. People feel free to step up and take responsibility	A well planned, low-energy town that loves the old, welcomes innovative development and is pedestrian and bike friendly and accessible to all
OUR OBJECTIVE IS:			
To take care of our trees	To provide secure, low-cost energy, water and waste management	To foster a culture of welcome where people are valued and their skills and talents nurtured	To minimise the impacts of traffic to create safe, quiet township
To create connectivity with bike and walking paths	To bring outside dollars into Newstead	To be an art-rich community that provides opportunities for creativity	To be a disaster ready community that knows what to do to defend and protect its people
To love and look after our river and bushland	To keep dollars in Newstead	To have a fit and healthy community	To ensure our existing community facilities meet current and future needs of our town and visitors
To create open spaces where people love to go, be, play and chat. These spaces have heart and spirit	To create an IT-savvy, connected community	To cater for our kids	To preserve and care for our historic buildings
	To get moving sustainably		A well planned town with modern, essential services

Strategies and actions

– where to next?

Open Spaces	
ASPIRATION – Shade, gathering spaces, connectivity and a healthy natural environment around our streets, bushland and river	
Objective	Strategies
1.1 Take care of our trees	1 Restore, repair and renew main street trees
	2 Restore trees and name plates to Avenue of Honour trees
	3 Underground powerlines in the main street
	4 Adopt and update 2009 street tree audit and use as a basis for renewal and development of heritage tree overlays and local management plan
	5 Provide new plantings for shade around key community venues e.g. outside pool, netball courts, community centre, etc
1.2 Create connectivity with bikes and walking paths	1 Link both sides of town with a pedestrian and cycling bridge that is part of an arts trail from the railway station, up Canrobert Street to the Newstead Primary School
	2 Create nature trails with unobtrusive interpretive signage through local bushland areas using local knowledge
	3 Create and update guide maps for local walking trails
	4 Off-road walking and cycling trails to nearby towns in Maldon, Castlemaine, Guildford and Maryborough
1.3 Love and look after our river and bushland	1 Support the Newstead Landcare Group to implement the Loddon River Plan
	2 Develop a local whole of landscape plan to protect biodiversity
	3 Eradicate litter along the river with Clean up the Loddon Day and other ongoing campaigns
	4 Minimise vehicular traffic in riverside areas near town by creating parking areas in less sensitive areas
	5 Educate the community about local weeds and carry out an eradication program
	6 Create and enhance wildlife corridors through the town
1.4 Create open spaces where people love to go, be, play and chat. These spaces have heart and spirit	1 Expand the pirate playground and Memorial Park to create town-square like spaces
	2 Revitalise Rotunda Park to include a Playground, Music venue and Botanical Garden using local native species. Improve toilet facilities and repair Band Rotunda.
	3 Support existing and create new local Management Plans for key open spaces (Rotunda Park, Newstead Racecourse, Railway precinct, Playground, Newstead Swimming Pool)
	4 Commission street art
	5 Improve our town entrances
	6 Develop a village square with restful places, chess boards, shady trees and grown-ups' socialising area

Dollars and Cents	
ASPIRATION – An economically sustainable, job-rich community with strong transport and IT links, powered by low-cost renewable energy	
Objective	Strategies
2.1 Provide secure, low-cost energy, water and waste management	1 Capture, store and re-use local storm water and encourage water wisdom
	2 Create a local depot for recycling, including larger materials and hard goods, run along the lines of the Newstead Op Shop
	3 Develop local energy generation using renewable sources (Newstead Power)
	4 Establish woodlot for firewood
	5 Establish Newstead as a plastic water bottle and plastic bag free town and install permanent drinking taps
	6 Install strategic and low energy/solar powered street lighting
2.2 Bring outside dollars into Newstead	1 Audit and promote business and industry opportunities in technology, art, tourism, agriculture, energy, retail (e.g. petrol co-op with an automated pre-pay petrol station, garage/fuel, hardware, caravan park, holiday accommodation, art gallery, local energy recharge service) and undertake traffic survey to determine business potential from passers by
	2 Develop a QR code for the town
	3 Employ a local grant writer to coordinate effort in sourcing funds for projects
	4 Develop a business hub incorporating office and meeting spaces
2.3 Keep dollars in Newstead	1 Promote and support local businesses and the RTC through patronage and extended services (e.g. Chemist script pick-up, mail delivery and Post-Office boxes)
	2 Provide mentoring, training and a blog for local businesses and build connections with important partners including the shire and bank
	3 Help local businesses prepare for and profit from large events
	4 Provide parking area for large vehicles and caravans to encourage them to stop and park easily (e.g. Rear of community centre could be paved and signposted)
	5 Improve liaison between local businesses and Council (and other agencies, e.g. Powercor) to minimise business disruption from infrastructure work
	6 Build business links between farmers and local community
	7 Encourage local home-based and CBD businesses to get together and share info
2.4 Create an IT-savvy, connected community	1 Provide local training in use of new technology/social media and IT support especially for aged and isolated community members
	2 Get Newstead connected to the National Broadband Network (NBN) with fibre and improved broadband access for remote areas
	3 Review, update and expand the capacity of the Newstead website and keep content current
2.5 Get moving sustainably	1 Encourage greater patronage of the local Community Bus and explore timetables to connect to Melbourne/Bendigo train services
	2 Develop off-road cycling and walking tracks to nearby towns including Maldon, Castlemaine, Maryborough and Guildford
	3 Investigate car pooling and share car register using RTC or social media

Community Life	
ASPIRATION – A healthy, creative community where people look out for each other, work and play together and connect, share difference and talents. People feel free to step up and take responsibility.	
Objective	Strategies
3.1 Foster a culture of welcome where people are valued and their skills and talents nurtured	1 Train, mentor and support our volunteers to help avoid burn-out, match skills and support generational change in community groups (eg. training for Newstead Echo in publishing and on-line journalism)
	2 Develop a 'Newcomers welcome pack' with essential contacts for local organisations and services, for new residents
	3 Encourage connections within Newstead and with outlying communities through events (e.g. sports days, festive celebrations)
	4 Hold a speed dating event where community groups introduce themselves to residents
	5 Build connections between generations by recording the stories of our elders and by visiting them
	6 Develop links with existing Leadership programs and encourage them to visit and connect with Newstead. Encourage local community members to participate. Establish a Leadership Fund to support community members' involvement in leadership programs
	7 Bring new ideas into the town through Rocket Science, leadership programs, Salon, and annual weekend for international students and create forums for conversation and community development
	8 Develop umbrella organisation/s to streamline financial management and governance of the town's many groups
	9 Celebrate with an annual 'Newstead Day'
3.2 Be an art-rich community that provides opportunities for creativity	1 Re-establish a theater group along the lines of NAPE
	2 Create a purpose-built arts hub (e.g. railway station, Givoni Mill)
	3 Support and encourage activities such as the Newstead Short Story Tattoo, Salon, Children's Literature Festival
	4 Establish and fund an artist-in-residence program, with our own and visiting artists
3.3 A fit and healthy community	1 Explore options for establishing more exercise opportunities, inc obstacle course, cycling and mountain biking, gym, social tennis, mini biking, BMX, skate park, pony club, basketball, table tennis, exercise, horse riding, off-leash dog walking
	2 Create small scale facilities for soccer, rugby, basketball
	3 Maintain community ownership and management of the Newstead Swimming Pool and build participation, e.g. squad swimming, activities for teenagers
3.4 Cater for our kids	1 Establish after-school programs such as cooking club, gardening, scouts and girl guides, art classes
	2 Explore ways to engage our kids in community development and community life (e.g. Kids Thrive, community planning, leadership programs and mentoring)

Bricks & Mortar

ASPIRATION – A well planned, low-energy town that loves the old and welcomes innovative development that is pedestrian and bike friendly and accessible to all

Objective	Strategies
4.1 Minimise the impacts of traffic to create safe and quiet township	1 Extend 50 km/h limit beyond the Newstead Primary School and establish 'Safe Street' crossing at the school (including flashing lights) and in the main street
	2 Explore ways to make our streets more pedestrian and bike friendly
	3 Re-introduce kerbed angle parking at Newstead Post Office to improve safety and access
	4 Consult with VicRoads to explore ways to reduce impact of heavy traffic through town and to prevent vehicles passing in the main street
	5 Work with Mount Alexander Shire on road grading to ensure habitat is protected and gravel roads are safe, and install 'NO SPEED: NO DUST' signs at strategic locations
4.2 Disaster-ready community that knows what to do to defend and protect its people	1 Work with the Newstead CFA, Newstead Police, MAS and SES to develop a Community Fire and Flood Plan for Newstead and surrounds and run information sessions on what to do in the event of an evacuation
	2 Consult with Mount Alexander Shire to repair, raise and maintain the levee bank
	3 Develop a fire plan that takes into account the impacts on habitat for birds, plants and animals
4.3 Ensure our existing community facilities meet current and future needs of our town and visitors	1 Improve the pirate ship playground by adding tables and chairs, a climbing frame, more trees and toilet facilities. Investigate options to expand the area to include Men's Shed and Givoni's Mill
	2 Add play areas to Rotunda Park and the Newstead Recreation Reserve
	3 Ensure the Newstead Recreation Reserve remains a multi-purpose venue that can accommodate events such as Newstead Live
	4 Add a canteen and food garden to the primary school
	5 Add an off-leash dog walking area
	6 Add facilities for caravans at the Newstead Racecourse
	7 Investigate best options for toilet facilities and consider Pirate Playground, Rotunda Park and Memorial Park
4.4 Preserve and care for our historic buildings	1 Find ways to encourage preservation of iconic public and private privately owned buildings, especially in the main street, including churches, courthouse and railway station
	2 Restore and renew the Newstead Railway Station to create an arts precinct/ business/community hub with artists' studios, workshop spaces, gallery and other related businesses

Strategies and actions – where to next? (cont')

4.5 A well planned town with modern, essential services	1	Revisit and review Newstead's Urban Framework in the MAS Planning Scheme in light of local and regional strategic plans
	2	Create opportunities for continuing community conversations around planning and sustainability (e.g. Rocket Science, visiting speakers, etc)
	3	Have input into regional planning strategies and initiatives, through N2021 and other formal avenues
	4	Ensure Newstead is connected to the National Broadband Network
	5	Tap Newstead into the natural gas pipeline
	6	Investigate options to make petrol available to local residents
	7	Create retirement accommodation, hostel or supported aged housing and low-cost social housing in keeping with the area's natural values
	8	Develop office/commercial spaces for new and established businesses
	9	Underground power lines, especially in the town's iconic streets
	10	Maintain operating standpipes on both sides of the river



WORKING OUT OUR PRIORITIES

The results reflect our community — its history, values, challenges and aspirations.

We had a huge array of ideas and strategies and our next step is to work out which ones to act on. Initially we can be guided by the level of support for various ideas (expressed as 'votes' at the event), but our plan must also be guided by what's possible and broader agendas. But the most important factor will be our own motivation and desire to see things happen.

During the consultation process, the most popular ideas were about natural gas, petrol, skate park, swimming pool water slide and the Newstead Railway Station restoration and renewal.

On the planning day the most popular ideas were around the Newstead Railway Station renewal, play equipment and playground improvements, street and township tree care, pedestrian and cycle tracks and trails, sustainability (inc. waste, energy and water use), mentoring and leadership, and creation of a volunteer registry/exchange scheme.

In addition to these major projects there are many and varied smaller projects that are a priority. Newstead has a strong tradition of making good things happen as a result of individuals or small groups of people acting according to the motto ... "First do no harm". With this in mind many of the ideas proposed will rely on individual and/or collective action to be realised. Some ideas will lay dormant until the energy and will is found to enact them, while other ideas may generate immediate interest. The Plan is therefore a smorgasbord of choices, not to direct our future, but to inspire and motivate.

It is our intention during the community feedback phase to examine these ideas further and to apply a consistent set of criteria to further gauge their level of support, need and feasibility. The purpose of this evaluation is not to 'knock out' or promote certain ideas but to road test their possibility.

The proposed criteria for project will include, but not be limited to the following:

- How important is the project/idea in terms of community benefit?
- What is the risk to the community of not proceeding with the project?
- Is it possible to develop a SMART (Specific, Measurable, Attainable, Relevant, Time-bound) objective?
- Is it technically feasible to undertake the actions required to enable the project to succeed?
- If the project requires private citizens/community members to change their behaviour/act differently what is the likelihood of this occurring?
- If the project requires change by other institutions (e.g. Local government, state government departments) is there a good chance that this will occur?

At this stage the plan suggests a set of major projects ...

1. Refurbishing and revitalising the **Newstead Railway Station** as an **arts precinct**.
2. Creating a **pedestrian bridge** across the **Loddon River** to connect both sides of town.
3. Establishing a **skate and bike park and playground** for the younger members of our community.
4. Establishing a connected network of **walking and bike paths** and trails between Newstead and surrounding towns, using existing easements and bushland areas.
5. A major renewal of street trees within the town precinct
6. Establishing a **Sustaining Volunteers Initiative** to support volunteers and community groups.

HOW OUR PLAN ALIGNS WITH REGIONAL, STATE AND FEDERAL PLANS

Ultimately, Newstead recognises it is part of a region, state and nation so has been careful to consider current planning scenarios, taking place at those levels.

Our plan fits the following.

- **The draft Loddon Mallee South Regional Growth Plan**, Department of Planning and Community Development Victoria.
- **The Loddon Mallee Regional Strategic Plan, Southern Region.** This plan explicitly sets six key strategic directions, one of which is to strengthen our communities, especially our small towns. Newstead wishes to build its profile and engagement in this plan. This plan, like the one above, sets out ways to accommodate growth without destroying the alluring nature and character of the area.
- **Regional Change Strategies – Regional Development Australia and Regional Management Forum.** These groups have nominated five key change catalysts for the Loddon Mallee Southern Region including Railing Ahead, Transformative Towns, Bendigo-Our Networked Regional City, Solar and Renewable Energy Industry, Ports of the Murray River. Newstead has been invited to be a case study in the Transformative Towns toolkit that will be used to identify transformative projects in 10 towns in the Southern Loddon Mallee Region.
- **2012-2018 North Central Regional Catchment Management Strategy.** This strategy seeks to engage communities in protecting and enhancing the integrity of the catchment. Care of the Loddon River which runs through Newstead and our bushland is very much part of Newstead's Community Plan (See Open Spaces).
- **Mount Alexander Shire Rural Land Study.** A future directions paper proposes preferred directions for planning of the shire's rural lands. Newstead has identified that a large sector of its workforce is employed in the surrounding agricultural sector and believes protection of farm land and key environmental assets needs to be considered.
- **Sustainable Regional Australia.** Newstead has been a key partner with Sustainable Regional Australia's Central Victoria Solar City project. It has run community-wide energy audits and is in the early stages of developing ideas for generating energy from renewable sources locally in a way that could generate funds and jobs for the community.
- **Regional Arts Australia National Strategic Projects 2013-2016.** Newstead's ambitions for building community by supporting our incredibly rich creative sector aligns with RAA's projects especially its "animating spaces" project which provides support for communities to host and present arts events in non-traditional spaces. The renewal of the Newstead Railway Station (see Bricks and Mortar) fits this objective.

Next steps

We are confident the final report goes a long way to reflect the ideas and wishes of the Newstead community. We are also aware that some segments of the community haven't contributed to the process to date. Attempts to ensure all residents have input and access to the draft plan and to provide comment on it are part of the engagement plan. This draft is part of that engagement.

Our next steps are to work out which of the huge array of ideas and strategies to act on by:

- getting feedback from you, the residents of Newstead and surrounds
- using this feedback, along with input from the pre-planning day and the planning day, to weigh up the benefits, risk and feasibility of projects
- identifying key projects and the people willing to help bring them to fruition
- publishing these in the completed Newstead Community Plan
- making copies of the Newstead Community Plan available online and at the Newstead Rural Transaction Centre

From here we will:

- Distribute draft Plan to Newstead residents for comment and conversation – from June 1, 2013.
- Invite further input and seek priorities for action – from June 1 to July 15, 2013.
- Hold a feedback forum at the Newstead Community Centre on Monday July 8 at 7pm. All are welcome to attend.
- Launch the final plan on Friday August 2, 2013
- **Enact it!**

How you can contribute

Tell us, by July 15 which projects in this draft community plan you see are the most important priorities and which you are willing to help bring to fruition with your time and talents. Fill in the Feedback Form overleaf and return to Newstead RTC

Or – Post to Newstead Community Plan Feedback, C/O Newstead RTC, 45 Lyons Street, Newstead 3462

Or – Post an email to: Geoff Park at geoffpark1963@gmail.com

Or – Post to Facebook at <https://www.facebook.com/NewsteadCommunityPlan>

Or – Post to the Newstead Community Plan website at <http://newsteadplan.wordpress.com>

And come to a Feedback Forum at the Newstead Community Centre on Monday July 8 at 7pm

P.S. This Community Plan will also help Mount Alexander Shire Council understand and respond to Newstead's needs.



Acknowledgements

To follow

Appendices

APPENDIX A: List of Newstead community groups

- Newstead Landcare
- Library Volunteers
- Newstead Walks
- Yoga
- Scrapbookers
- Playgroup
- Historical Society
- Karate
- Pole Walking
- Tai Chi
- Spinners
- Canasta
- Mens' Shed
- Bowling Club
- Echo Committee
- Croquet Club
- Community Garden
- Anglican Church
- Uniting Church
- St Annes Catholic
- Produce Exchange
- Green Gully Fireguard
- Newstead Racecourse
- CWA
- Preschool
- Renewable Newstead
- Cemetery Trust
- Cricket Club
- CFA Auxiliary
- Community Bus
- Friends of Newstead Railway Station
- RTC Volunteers
- Rotunda Park
- Swimming Pool
- Newstead Football Netball Club
- CFA
- Community Centre
- Newstead 2021
- Accessible Newstead

APPENDIX B: Notes on socio-economic indexes for Newstead

Prepared by Ray Culvenor 30th April 2013.

The following note has been extracted from the ABS publication 2033.0.55.001 "Technical Paper – Socio-Economic indexes for Areas (SEIFA) 2011".

Socio-Economic Indexes for Areas (SEIFA) is a product developed by the ABS that ranks areas in Australia according to relative socio-economic advantage and disadvantage. The indexes are based on information from the five-yearly Census.

SEIFA 2011 is based on Census 2011 data, and consists of four indexes, each focussing on a different aspect of socio-economic advantage and disadvantage and being a summary of a different subset of Census variables.

Some common uses of SEIFA include:

- determining areas that require funding and services,
- identifying new business opportunities, and
- assisting research into the relationship between socio-economic disadvantage and various social outcomes.

The indexes and associated documentation are free of charge on the ABS website.

For SEIFA 2011, the notion of relative socio-economic advantage and disadvantage is the same as that used for SEIFA 2006. That is, the ABS broadly defines relative socio-economic advantage and disadvantage in terms of people's access to material and social resources, and their ability to participate in society.

SEIFA 2011 consists of the same four indexes as produced for SEIFA 2006 and 2001, each referring to the general population:

- the Index of Relative Socio-economic Disadvantage (IRSD),
- the Index of Relative Socio-economic Advantage and Disadvantage (IRSAD),
- the Index of Education and Occupation (IEO), and
- the Index of Economic Resources (IER).

While SEIFA is very detailed (i.e. having four indexes and many various indicators of rankings), for the purposes of the Newstead Planning document, a summary table for Newstead and surrounds has been prepared using just one index – the Index of Relative Socio-economic Advantage and Disadvantage (IRSAD).

For comparison purposes, the indexes for Mt Alexander Shire and Maldon have been included, as have a number of areas (SA1s) located around Newstead.

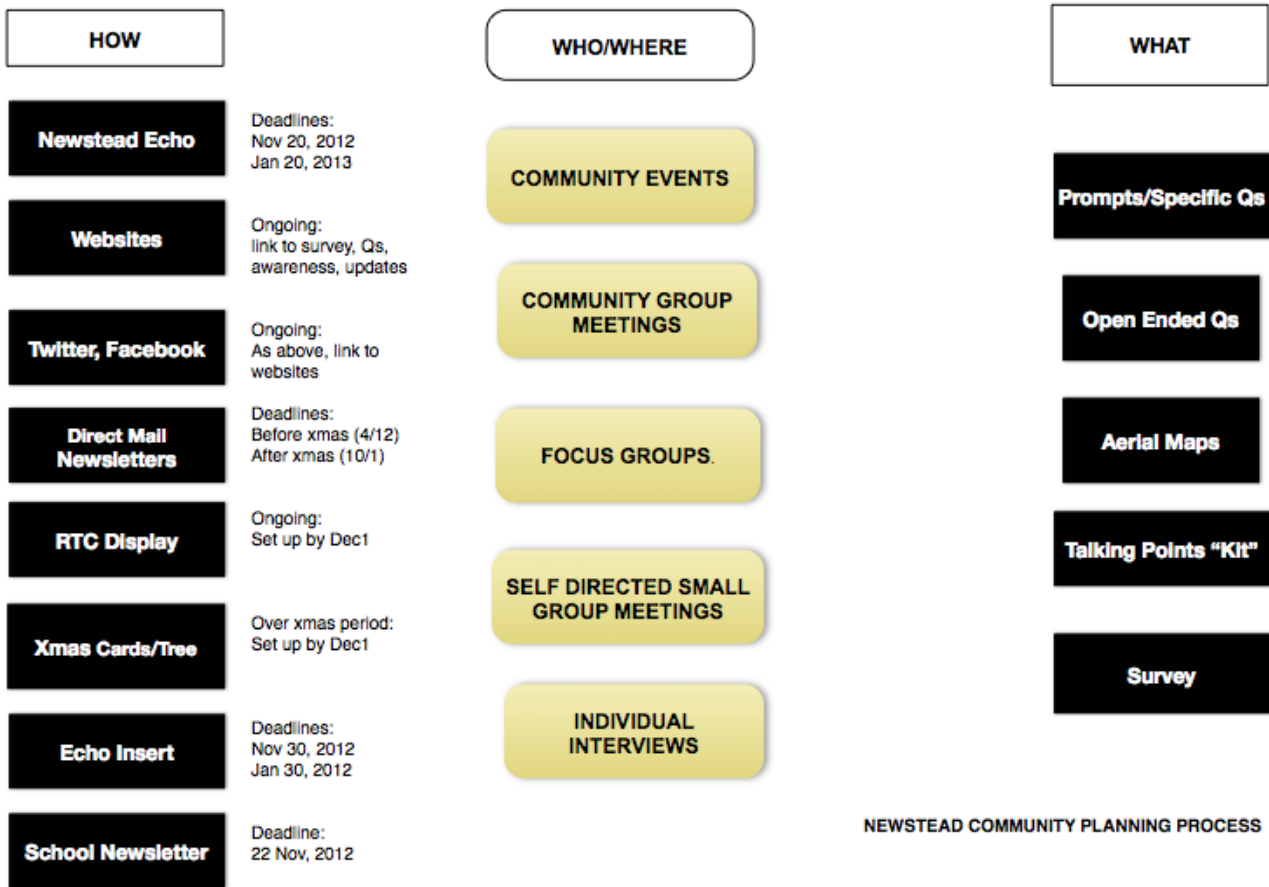
Area name (or description)	ABS Area type	ABS Area Identifier	Index of Relative Socio-economic Advantage and Disadvantage		Usual Resident Population
			Score	Decile	
Mt Alexander Shire	LGA	25430	970	6	17605
Newstead SSC	SSC	21013	949	3	798
Maldon SSC	SSC	20831	965	4	1432
Newstead	SA1	2102802	927	3	512
Around N (Joyces Ck, Strangways)	SA1	2102811	989	5	286
Around N (Sandon, Werona)	SA1	2102812	994	5	187
Around N (Yapeen)	SA1	2102813	995	5	309
Around N (Welshmans Reef)	SA1	2102820	964	4	431
Around N (Guildford)	SA1	2102822	946	3	244
Around N (Clydesdale, Yandoit)	SA1	2101119	981	4	309

Notes:

1. ABS Area types are: LGA = Local Government Area, SSC= State Suburb, SA1= Statistical Area Level 1. (Note that the Newstead SSC has a larger coverage than the SA1 centred on the Newstead town and thus a larger usual resident population.)
2. Scores: a lower score indicates that an area is relatively disadvantaged compared to an area with a higher score. Scores should only be used in distributive analysis. To enable easy recognition of high and low scores, the CD index scores have been standardised to have a mean of 1,000 and a standard deviation of 100 across all the area sets in Australia.
3. Deciles: all areas are ordered from lowest to highest score, the lowest 10% of areas are given a decile number of 1 and so on, up to the highest 10% of areas which are given a decile number of 10. This means that areas are divided up into ten groups, depending on their score. Decile 1 is the most disadvantaged relative to the other deciles. Note that deciles have equal number of areas, not people. The decile shown above relates to the set of areas for each area type – thus Mt Alexander Shire decile of 6 means the 6th decile of all LGAs, and Newstead SSC decile of 3 means the 3rd decile of all SA1s.

Socio-economic Indexes for Areas (SEIFA), 2006

APPENDIX C: Engagement plan diagram



APPENDIX D: Values information table/chart and full listing

Value	Source	Category
Social connections/connecting x 2	face to face	C
Connections through echo, rtc, comm garden, carers	face to face	C
Connecting x 3	face to face	C
Access to council through local rep	face to face	C
Support network	face to face	C
Connections	face to face	C
People know and help one another	face to face	C
Able to have input into community life	face to face	C
Friendly support network – landcare, garden, spinners, RTC, produce exchange, choir, friends, bookgroup	face to face	C
Relationships	survey	C
Friends	survey	C
Community interaction	survey	C
Meeting areas/community facilities x 5 (community garden, community centre, RTC)	face to face	C/F
Community spirit/sense of community x 4	face to face	CS
Welcoming	face to face	CS
The possibilities and positiveness	face to face	CS
The determination of the community	face to face	CS
Friendly x 3	face to face	CS
Caring	face to face	CS
Sustainability	face to face	CS
Loyalty	face to face	CS
Positive community, engaged, creative and creating	face to face	CS
Open and friendly	face to face	CS
Community spirit	face to face	CS
Moving forward energy	face to face	CS
Sense of heart in the town	face to face	CS
Inclusive, allowing	face to face	CS
Confidence, people doing their own thing, quiet achievement	face to face	CS
The spirit of the community	face to face	CS
Community	face to face	CS
Creative community	face to face	CS
Sense of community	face to face	CS
Vibrant community	face to face	CS
Inclusiveness, determination	face to face	CS
Friendly, safe, connecting	face to face	CS
People care about each other and sustainability	face to face	CS

Value	Source	Category
Friendly safe connecting	face to face	CS
Loyalty	face to face	CS
Open and friendly	face to face	CS
Good sense of community	face to face	CS
Community ethic - participation, volunteerism	survey	CS
Active, vibrant community	survey	CS
Caring	survey	CS
Nurtures a culture that values community cooperation and shared activities and beauty	survey	CS
Sustainability focus	survey	CS
Sense of self reliance	survey	CS
Go-ahead ideas for a small place	survey	CS
Welcoming	survey	CS
Prodigious snergy for art, music, community service, gardening, sharing knowldege	survey	CS
Community capacity to pull together to achieve things	survey	CS
Newsteadoans value "community"	survey	CS
Creative imagination to bring things and ideas into being through groups	survey	CS
Ability to make a contribution – small or large – and participate in the life of the town	survey	CS/H
The echo x 3	face to face	F
The services/places for kids – preschool, pool, playground	face to face	F
The mix of traders/services x 12	face to face	F
Music	face to face	F
Internet (wireless) connection	face to face	F
The events	face to face	F
What it offers for a town of it's size	face to face	F
The range of activities and events	face to face	F
Facilities	face to face	F
supermarket, PO, RTC, vbank, pub, cafe, laundry, swimming pool	face to face	F
Butcher	face to face	F
Facilities and services you need to live without a car – grocer, school, bank, PO	face to face	F
Shops, RTC, echo, community garden	face to face	F
Bank, PO, community meeting areas, Echo, cafe,	face to face	F
Facilities – community centre – classes, RTE, wireless, community garden, Echo, local businesses	face to face	F
RTC – services and local access to council	face to face	F
Wireless connection	face to face	F
Music festival, school, preschool, racecourse, cafe, RTC, bank, PO, supermarket, milk bar, pool, playground	face to face	F
PO, RTC, bakery	face to face	F
Pub, dig	face to face	F

Value	Source	Category
Schools	survey	F
Facilities, services	survey	F
Basic facilities/services/businesses x 3	survey	F
Home based businesses contributors	survey	F
Artistic and IT skills	survey	F
Echo is a community treasure	survey	F
Access to computers, service	survey	F
Events, facilities (garden, RTC, pool)	survey	F
The V Line bus	survey	F
The school	survey	F
Level of skills and expertise, from professional through to trades and services	survey	F/P
Community centre, pool, main street and trees	face to face	F/PA
The community groups	face to face	G
The comraderie of groups	face to face	G
Strength and variety of interest groups	face to face	G
Environmental groups	face to face	G
All the community groups – ‘the most community groups in Australia?!’ achieving tangible things	face to face	G
People get involved in things they like doing – the majority of community groups	face to face	G
A variety of iterest groups	face to face	G
Number of volunteer groups	survey	G
Wide range of cultural activity	survey	G/P
The history and heritage x 4	face to face	H
Lack of change	face to face	H
Lack of rules and burocracy compared with larger centres and city; we can take more control, make a bit of chaos	face to face	H
Old buildings	face to face	H
Heritage and histoic buildings being used as businesses	survey	H
The way the community treasures its history	survey	H
The layers of history – gold and now, Euopean trees and gum trees, peeling back things, the old and new people; the old farmers are the most tolerant cockies I’ve ever come across and I know how uninclusive they can be’	face to face	H/P
Art and music part of community life	survey	H/P
The river x 6	face to face	N
The climate	face to face	N
The forest x 3	face to face	N
The environment	face to face	N
The seasons – autumn, winter, spring	face to face	N
The landscape	face to face	N

Appendices (cont') Appendix D: Values information table/chart and full listing

Value	Source	Category
Night sky	face to face	N
The big, big sky	face to face	N
The night sky, the bush	face to face	N
The world can seem small here but nature makes it much bigger	face to face	N
Places – river, open spaces, access to nature	face to face	N
River, environment	face to face	N
River	face to face	N
Bush, red white and blue mine, Muckleford gorge, river	face to face	N
Environment – bushland, waterways, open spaces	survey	N
Climate x 2	survey	N
Environment – mix of urban, rural, bush	survey	N
River	survey	N
Space and peace of rural woodlands	survey	N
State forest	survey	N
The river and environment surrounding the town	survey	N
Walks, birdlife	survey	N
Environment	survey	N
Access to bush, river, lake	survey	N
The river is a defining feature x 3	survey	N
Natura; spaces flowing from the river	survey	N
River, community garden, Roger's art garden	face to face	N/F
Landcare, muckleford forest	face to face	N/G
The environment, including built environment	face to face	N/PA
Farmland surrounding the town	survey	N/PA
the ancient river red gums; magic, even without water	face to face	N/S
The people are fabulous, tolerant	face to face	P
The "x factor" – misfits, eccentrics, independence of individuals; not a homogenous community	face to face	P
Rural (farming?) families	face to face	P
The people are accepting	face to face	P
Neighbours	face to face	P
Interesting and committed people	face to face	P
Influx of new people and ideas	face to face	P
Interesting characters	face to face	P
You can talk to anyone, interesting people – scratch beneath the surface and we have amazing talented people, but they are ordinary	face to face	P
Really diverse culture of people	face to face	P
Interesting and committed people	face to face	P
Diversity	face to face	P

Value	Source	Category
Change and influx of new people and ideas	face to face	P
The people	face to face	P
Similar cultural values of the people	survey	P
Diverse population mix – ages, interests, skillsets	survey	P
Depth and breadth and variety of the population and their talents, gifts	survey	P
'Left bank' of Castlemaine	survey	P
Artists and musicians	survey	P
People and connections,	survey	P/C
Interesting, functional, proactive community	survey	P/CS
Isolation, quiet	face to face	PA
Compact, village feel x 2	face to face	PA
Proximity to large centres x 3	face to face	PA
Small	face to face	PA
The elm trees/main streetscapes	face to face	PA
Built environment	face to face	PA
The main street and trees	face to face	PA
Green spaces	face to face	PA
It is a village, not a town	face to face	PA
Space	face to face	PA
Village	face to face	PA
Walking distance to town	face to face	PA
Beauty	face to face	PA
Can work from home	face to face	PA
Close to larger centres	face to face	PA
Close to Melbourne but small town feel	face to face	PA
The highway keeps people coming through, valuable for business	face to face	PA
Able to Work from home	face to face	PA
Close to Melbourne	face to face	PA
Shade trees	face to face	PA
Elm trees	face to face	PA
Village feel	face to face	PA
Close to surrounding centres, Castlemaine, Ballarat, Bendigo and Melbourne	face to face	PA
Proximity to Melbourne x 5	survey	PA
Close to work and family	survey	PA
Population change, opportunity, growth	survey	PA
Small	survey	PA
Village setting	survey	PA
Trees in main street	survey	PA
Room for fruit trees	survey	PA

Appendices (cont') Appendix D: Values information table/chart and full listing

Value	Source	Category
Proximity to major centres x 6	survey	PA
Traffic passing through - crossroads	survey	PA
Picturesque township and shade trees	survey	PA
Size of houses and space of blocks	survey	PA
Open spaces	survey	PA
Wide streets and trees	survey	PA
Unique location – geographic and environmental crossroads, diversity x 2	survey	PA
Small viillage, human scale, services within walking distance	survey	PA
Big enough to have school and businesses, services, facilities but small enough that people need to volunteer and contribute/participate to get things done	survey	PA
The smaller outlyng localities and sense of community	face to face	PA/CS
Not too built up; no streetlights, traffic lights, small, everyone knows each other	face to face	PA/CS
Aesthetics – art (public, private)	face to face	PA/F
Can work from home, the school	face to face	PA/F
Close, small, basic facilities	face to face	PA/F
Village atmosphere with facilities of a larger town	face to face	PA/F
Affordability x 3	survey	PA/F
Close to train service x 2	survey	PA/F
Near to melbourne but secluded enough	face to face	PA/N
Natural and built beauty	survey	PA/N
Small town feel	survey	PA/S
The 'feel', the spirit of the place	face to face	S
Pleasant town	face to face	S
Uniqueness of place	face to face	S
The country atmosphere	face to face	S
Safe x 2	face to face	S
Magical	face to face	S
An easy place to be by yourself	face to face	S
Safe	survey	S
Secure for kids – great place to grow up and grounding	survey	S
Changing	survey	S
Peace and quiet	survey	S
Charms of country life outway suburban	survey	S
Rural lifestyle	survey	S
Self sufficiency – simpler, lower cost life	survey	S
Peaceful x 2	survey	S
Good energy	survey	S
Time and space – the time and the mental isolation and mental space to be an artist	face to face	S/N
Pleasure and safety of a small town	survey	S/PA

APPENDIX E: Community planning day flyers

APPENDIX E: Community planning day flyers

OUR TOWN, OUR SAY
COMMUNITY PLANNING DAY – Sunday March 3
 NEWSTEAD COMMUNITY CENTRE, 11AM - 3PM
 CHILDCARE AVAILABLE
 LUNCH PROVIDED BY NEWSTEAD PRIMARY SCHOOL
 PLEASE BRING A PLATE TO SHARE FOR MORNING OR AFTERNOON TEA
BE A PART OF CREATING NEWSTEAD'S PLAN FOR THE FUTURE
 JANET - 0439 003 469, GEOFF - 5476 2593, GEN - 5476 2633 OR [ECOLOGICA@BIGPOND.COM](mailto:ecologica@bigpond.com)
COMMUNITY PHOTOS - COURTESY OF THE NEWSTEAD ECHO

Dear

We invite you to **Newstead's Community Planning Day** on Sunday **March 3**, to help create a plan for Newstead's future.

A group of local volunteers has been working since late last year on Newstead's Community Planning Project - '**Our Town, Our Say**', with hundreds of responses from Newstead and surrounding areas.

Now it's time to talk about themes and ideas and decide what should be part of Newstead's Community Plan.

Please join us **see over for details**

**OUR TOWN, OUR SAY:
 DEVELOPING A COMMUNITY PLAN FOR NEWSTEAD**

**NEWSTEAD
 COMMUNITY PLANNING DAY**

Sun 3 March, 11am - 3pm
 Newstead Community Centre
Childcare available

**LUNCH CATERED FOR BY NEWSTEAD
 PRIMARY SCHOOL**

**Please bring a plate for morning
 or afternoon tea**

RSVP, or for more info:
 Janet 0439 003 469
 Geoff 5476 2593
 Gen 5476 2633
ecologica@bigpond.com

**YOUR RSVP WILL HELP US BUT IS
 NOT NECESSARY**

General Knowledge Quiz (see Feb Echo insert) drawn ... prizes for adult and u/14 child
 Music, good food, displays
 Catch up with your friends, neighbours and welcome newcomers to Newstead

APPENDIX F: Consultation results – full listing

Source	Theme	Open Spaces
S	Trees	A village square with restful places and shady trees
PP	River	Accessible picnic spot by the river
PP	Tracks	Accessible walking tracks
PP	Tracks	Accessible walking tracks
PP	River	Accessible walking tracks along river
C	River	Accessiible footbridge
B	River	Art//sculpture park along levee including seats
FB	Trees	Avenue of Honour - restore trees
B	Tracks	Better bike and walking paths for schoolkids
PP	Local bushland	Better quality bushland - forest understory
2021	Tracks	Bicycle path from Newstead to Guilford
B	Tracks	Bike path along highway to Castlemaine
B	Tracks	Bike path along river
Blog	Tracks	Bike path Newstead to C'maine. Like Carisbrook/Mrybrh
C	Tracks	Bike paths - Maldon, WR, Castlemaine
C	Tracks	Bike paths - Maldon, WR, Newstead, Castlemane
C	Tracks	Bike track to Castlemaine
PP	Tracks	Bike track to Castlemaine (2)
B	Tracks	Bike track to Castlemaine (2)
C	Tracks	Bike tracks- Newstead/C'mne, Maldon/ Newstead. Attract cycling groups
C	Tracks	Bike trails - off road, connect, no fossil fuel, leisure
PP	Tracks	Bike trails to avoid main highways
C	Tracks	Bike walk path around town (5-10km)
F	River	Bridge accross river
C	River	Bridge accross river
FB		Bridge across Loddon at the Flying Fox (wheelchair accessible)
PP	Trees	Bundle power lines - reduce tree damage
PP	Trees	Bundle power lines to reduce tree damage
S	River	Camping ground beside Loddon
FB	Trees	Castlemaine-Newstead rd approach - rock garden, succulents, herbs
PP	River	Clean up river walking paths
K	River	Cleaning the Loddon - mud steps at the fishing spot
C	Trees	Community centre - more shade trees at rear

Source	Theme	Open Spaces
PP	River	Connect Newstead to Cairn Curran - track by river
PP	Local bushland	Control Chilean needle grass - Cemetry Rd
F	Local bushland	Develop business about Loddon, Box Iron Bark, landscape flora & fauna
B	River	Dog pooh bag dispenser
S	River	Facing climate change - love to see river still flowing
B	Tracks	Food trail - school to community garden
M	River	Footbridge at Dundas St
S	River	Footbridge for w/chairs, bikes
C	River	Footbridge over Loddon at Canrobert St
B	River	Footbridge over river accessible to wheelchairs
B		Footbridge over river accessile to wheelchairs
S	River	Footbridge over river walk park
C	River	Footbridge spanning lodon
2021	Tracks	Footpath from school to community garden
2021		Footpath from school to Community Garden
S	Green spaces	Green spacesi the middle of town important to preserve
PP	Green spaces	Having access to nature from the town
C	River	Interpretive/signed walking trail along each side of Loddon
PP	River	Lack of river crossings for CFA tankers
S	Local bushland	Link surrounding v adillages with Newstead, Muckleford Forest,, Sandon, Rise and Shine
S	River	Litter issues along Loddon
S	Local bushland	Local wildlife rescuers get grants to cover cost of food and medical care
PP	River	Loddon clean up, maintaining spots - fishing, rubbish, fire danger
PP	Green spaces	Make connections - parks and toilets, play facilities
S	River	Make river area near the bridge a feature of the town
PP	River	Managing litter on river and road
PP	Tracks	Measured walking tracks - loops of different lengths
PP	Green spaces	Mens Shed relocate to garage and create larger park and town square where old CFA shed, Givonis in CBD

Appendices (cont') APPENDIX F: Consultation results – full listing

Source	Theme	Open Spaces
pp	Local bushland	More biodiversity monitoring - photo points, "blitz", connectong country
PP	Local bushland	More birds - trees, habitat for nesting/food
B	Green spaces	More plants
C	Trees	More plants around
Echo	Trees	More tree planting to enhance main avenue
C	Rotunda park	Native botanical garden at rotunda
PP	Local bushland	Newstead "safari" (based on African)
C	Local bushland	No cats, no rabbits, no bridal creeper, no blackberries
B	River	No rubbish dumped by river
S	Tracks	Off road paths for kids to cycle to school
S	Trees	Open spaces, wide tree lined streets
C	Tracks	Path from Fence Track to Codrington Street
S	Tracks	Paths between facilities - built and natural
B		Pedestrian bridge across Loddon
2012	River	Pedestrian bridge over river
B	River	Pedestrian bridge over river
S	River	Pedestrian bridge over river
2021		Pedestrian bridge over river
C	River	Picnic barbecue area beside river - clear spot for swimming
B	River	Picnic table and bench seats on west side of river
K	Rotunda park	Playground at rotunda
C	Rotunda park	Playthings at rotunda (2)
PP	Trees	Powerlines and street trees - how to manage damage
S	Trees	Powerlines underground
C	Trees	Powerlines underground
Blog	Local bushland	Preserve & protect river, Sandon & Muckleford Forest, Moolort Wetlands, Smeaton Volcano, Rise and Shine, Cairn Curran
PP	Green spaces	Preserve, protect green spaces in town
PP	Local bushland	Preserving GG bush - understorey, degraded in pockets
Echo	Green spaces	Public spaces (roadsides, small areas in town) cared for, appreciated, used

Source	Theme	Open Spaces
K	River	Release some fish into the river
PP	River	Removal of graffiti on bridge
C		Re-open train line
PP	Trees	Retain/protect main streetscape and trees
PP	Rotunda park	Revitalise and use rotunda - great music venue
PP	Green spaces	Ribbons of indigenous plants connecting from town to landscape
C	River	River front - trails, revegetation, swimming, fishing. River as town feature
S	River	River made a leading attraction
C	Tracks	River side - safe, level walking track away from road
C	River	Riveride safe, level walking track away from road
PP	River	Riverside & bush walking tracks. Accessible and well signed
PP	Green spaces	Road reserves in Newstead - link or regree
S	Tracks	Roads and walking tracks improved
PP	Rotunda park	Rotunda fixing up (2)
S	Rotunda park	Rotunda park improvement
S	Tracks	Safe bike/walk paths from Sandon via Walkers or Pound Lane. Emphasise pleasure of journey
PP	River	Safe walking bridge
2021	River	Sculpture trail along levee
S	Tracks	Separating cars from pedestrians (eg Rec Reserve")
B	Trees	Shade at the tennis courts
PP	Trees	Shade trees at back car park of Community Centre
PP	Trees	Shady street trees
2021	Street art	Street art
PP	Trees	Street tree plantings - continue earlier work
2021	Trees	Street tree renewal
S	Trees	Street tree renewal and pruning
K	Trees	Tennis, netball court shade
K		Theatre
PP	River	Tie the two sides together
Echo	Rotunda park	Town botanical garden with emphasis on natives at rotunda
B	Street art	Town sculpture
S	River	Township paths - river, footbridge

Appendices (cont') APPENDIX F: Consultation results – full listing

Source	Theme	Open Spaces
S	River	Traffic free crossing over river
F	Tracks	Traffic free walking and cycling tracks between towns
B	Trees	Tree planting to replace old trees
FB		Universal access to all businesses
PP	Tracks	Use local knowledge to determine tracks
PP	Trees	Value the juxtaposition of native and European trees
Echo	Green spaces	Value the open spaces, vacant tracts in CBD without compromising ... covenanting?
Echo	Tracks	Walking path and off-road cycle track - Newstead, Castlemaine, Maldon
Echo	Tracks	Walking track and off-road cycle track between both Newstead town sections
B	Tracks	Walking track from Newstead to Maldon
PP	Tracks	Walking tracks
PP	Tracks	Walks – Red, White & Blue, Muckleford Creek, river
PP	Local bushland	Whole of landscape plan - fire planning, biodiversity
PP	Green spaces	Whole of town approach to trees, paths, levees, buildings - fire, drought, safety, shade
Echo	Green spaces	Wildlife corridors - unused public space (National scheme)
Echo	Local bushland	Wildlife crossings on Midland Hwy and Maldon Rd
K	Local bushland	Wildlife park

Source	Theme	Dollars and Cents
K	Local Business	A bike shop
K	Local Business	A book store
K	Local Business	A hospital
K	Local Business	A little gym
2021	Sustainability	Affordable social housing
K	Local Business	Age delivered with mail
S	Sustainability	Alternative energy generation
PP	Sustainability	Aluminium can recycling depot
S		Artists studio and gallery hubspace - business incubator
PP	Sustainability	Being more sustainable
S	Local Business	Better pub meals
PP		Better public transport connections - eg to Melb train
B	Tourism	Bigger, better town entrance signs
FB	Sustainability	Biomass generation
PP		Broadband coverage
PP	Local Business	Business/RT opening hours to reflect population change (Sat am)
K	Local Business	Caravan park - near the river (x3)
FB		Castlemaine-Newstead road approach ugly. Rock garden, succulents
F	Employment Generation	Changing business land use, new industry? What, how etc
C		Chemist script pickup
S	Sustainability	Community food & green waste composting
C		Community market/swap. Local produce sale/swap
S	Local Business	Community petrol station and alternative fuel centre
PP	sustainability	Community woodlot
2021	Sustainability	Community woodlot at the Newstead Racecourse
C	Sustainability	Community woodlot, plantation, protect harvest local & redgum forests, involve local wood suppliers
PP		Consolidate farming land for food production
S	Local Business	Curatorial services and art gallery management
Echo	Tourism	Encourage traffic to stop & browse - pedestrian friendly streetscape & atmosphere
S	Sustainability	Energy self-sufficiency for Newstead

Appendices (cont') APPENDIX F: Consultation results – full listing

Source	Theme	Dollars and Cents
PP	Tourism	Events bring life & \$\$
PP	Tourism	Events bring life, \$ to town
F	Employment generation	Farming in the future
S	Local Business	Find a purpose for Givoni Mills
K	Local Business	Fishing store
PP		Free tuition to everyone who wants to use the Internet, Facebook, Twitter, Email
C	Sustainability	Garage mechanic, charge/service electric cars
PP	Local Business	Garage mechanic, petrol, diesel mechanic for farmers
C	Local Business	General Store open later - fryer on after 7:30pm
PP	Employment Generation	Getting young people to move here
FB	Local Business	Givoni - gallery space
C	Local Business	Givoni factory - remove asbestos
S	Local Business	Givoni factory in main street is a waste to be empty
FB	Local Business	Givoni Mills
S	Local Business	Givoni Mills - what next
FB	Employment Generation	Grants writer for Newstead
K	Local Business	Hardware store (x2)
PP	Sustainability	Housing shortage
PP		Increased demands on PO - extra boxes. Suitable car parking
PP		Influx of new people are saviour for area (in past and now)
C	Local Business	Local business to be supported
S	Local Business	Local garage and petrol station - loss is felt
S		Local primary school provides strong economic contrib - keep school vibrant, keep families in Newstead
S	Sustainability	Local recycling depot with free access for paid up members, local artists, inventors, mens shed and small farmers. Fees on scale for sorting
S	Sustainability	Local woodlot
S	Local Business	Locally grown food to be sold at the IGA
S	Local Business	Locals need to keep spending as much as they can locally
C		Lovely town square space

Source	Theme	Dollars and Cents
PP	Sustainability	Low cost, low energy housing
PP		Mail delivery available to all district residents
s	Employment Generation	Maintaining an age-diverse population, jobs for young people
S	Local Business	More variety of produce
S		NBN connections
Echo	Local Business	New industry, employment possibilities - eg technology to retain younger residents
FB		Newstead as hub/link for services etc to other areas
FB	Local Business	Newstead Business review blog
FB	Local Business	Newstead garage site - many ideas
PP		No Macdonalds
S	Local Business	Organic food shop
C	Local Business	A service station
PP	Local Business	Fuel
FB	Local Business	Fuel on sale again - card reader bowzers
PP	Local Business	Fuel station
PP	Local Business	Fuel station
PP	Local Business	Fuel station
PP	Local Business	Fuel station
S	Local Business	Fuel, petrol, LPG
S	Local Business	Petrol and electric car charging station
PP	Local Business	Petrol availability
S	Local Business	Petrol bowser
S	Local Business	Petrol bowser
S	Local Business	Petrol bowser
K	Local Business	Petrol station
K	Local Business	Petrol station
K	Local Business	Petrol station
K	Local Business	Petrol station
K	Local Business	Petrol station
K	Local Business	Petrol station
K	Local Business	Petrol station
Blog	Local Business	Petrol/fuel sales (and look at alternative sources)
PP	Local Business	Petrol
PP	Local Business	Petrol
PP	Local Business	Petrol
PP	Local Business	Petrol
C	Local Business	Petrol

Appendices (cont') APPENDIX F: Consultation results – full listing

Source	Theme	Dollars and Cents
C	Local Business	Petrol
S	Sustainability	Petrol & electric car charging station
PP	Local Business	Purpose-built PO for changing nature of business & community
Echo	Sustainability	Renewable Newstead - community led purchase of solar hot water systems at bulk price
FB	Sustainability	Renewable Newstead Follow on?r Home Energy Assessmants
PP	Local Business	Rental housing
PP	Sustainability	Roadside rubbish - returnables deposit
FB		Rocket Science revival
S	Sustainability	Self-sufficiency - energy supply, food security, water supply
PP	Sustainability	Self-sufficient & sustainable community: food, water, energy, internet communication
C	Local Business	Shop locally & support local business
S	Sustainability	Small scale energy project
PP	Sustainability	Small, affordable housing
PP	Sustainability	Smaller, affordable housing with smaller gardens
S	Employment generation	Small-scale economic activities - creative, diverse employment
PP	Sustainability	Solar bulk buying
S	Sustainability	Solar energy plant for locals, wind turbines, waste recycling, water recycling for gardens
PP	Sustainability	Solar park - energy self-sufficiency
Blog	Sustainability	Solar village
PP	sustainability	Standpipes that operate - opp Railway Hotel, RTC
Echo	Tourism	Study of traffic flow - how many vehicles go through Newstead? How many stop in town?
Echo	Tourism	Study traffic flow cycles - will lower speed mean more business for Newstead
C	Local Business	Support farmenrs
PP	Sustainability	Sustainable - food, water, energy, communications
S	employment generation	Sustainable income from agriculture
S	Tourism	The crossroads and the river - economic viability for past 100 years and next?

Source	Theme	Dollars and Cents
PP	Tourism	Tourism to draw people but not the way of Maldon
FB	Tourism	Tourist map - new improved version
PP		Use more FM Radio station, Facebook
PP	Employment generation	Vibrancy of constantly changing businesses
K	Local Business	Video game store
PP		Visiting doctor or health professionals
PP	Tourism	Walking tours - guided - locally, join with dry diggings track
FB	Sustainability	Waste materials - reuse, recycle
PP	sustainability	Water bottle free town, (bubbler taps)
PP	Sustainability	Water saving/storage
K	sustainability	Xmas tree farm

Appendices (cont') APPENDIX F: Consultation results – full listing

Source	Theme	Community Life
K	Sport	A little gym
PP	Support and connections	A sister relationship with another village (eg Greece)
PP	Sport	Activities for 13-15 y.o. kids, skate park, BMX track
PP		Affordable or no-cost computers
PP	Community participation & volunteerism	Aging church congregations
PP	Community participation & volunteerism	Aging population - how to keep young energy, people
K	Sport	An obstacle course
K	Sport	An obstacle course
K	Learning	Art classes at RTC
K	non sporting	Art club
K	non sporting	Art club
K	Sport	Basketball club
K	Learning	Boy scout and Girl Guides
K	Learning	Boy scout and Girl Guides
PP	How we live, development	Bush subdivisions in Muckleford forest - how to contain
Echo	Non sporting	CERES like garden at the Community Garden
S	Sport	Change in junior footall league
K	Echo	Colouring competition in Echo
K	Echo	Colouring competition in Echo
C	How we live, development	Committed Green Spaces - Sustainable town planning and design nurtures humans and natural environment
F	How we live, development	Community conversation about growth and change
Echo	Community participation & volunteerism	Community group succession - keeping N vibrant but connected to past
C	Support and connections	Community market/swap, local produce
PP	Support and connections	\Connections through dogs, Echo,pool, Mens Shed, music (pub sessions)
PP	Newcomers	Connections through dogs, Echo,pool, Mens Shed, music (pub sessions)
S	Support and connections	Connnections with more isolated residents
PP	How we live, development	Consolidated farming land for food production

Source	Theme	Community Life
PP	How we live, development	Contain housing dev't to town area - no 100, 40, 20 acre blocks in agric areas
PP	How we live, development	Controlling dev't or the type of dev't
K	Learning	Cooking club for kids
K	Learning	Cooking club for kids
K	Learning	Cooking club for kids
K	Learning	Cooking club for kids
K	Learning	Cooking club for kids
K	Sport	Cycling and mountain bike club
K	Sport	Cycling and mountain bike club
K	Sport	Cycling and mountain bike club
PP	How we live, development	Development that doesn't put people and/or the bush at risk
PP	How we live, development	Dev't - limit the number of very small blocks. Larger house blocks
Echo	How we live, development	Dev't in future - corridor or growth areas emanate from township without intrusion or demolition of current facades and charm
Echo	How we live, development	Dev'ts in town should have restrictive covenants on design - compatible with historic small township (height, materials, style)
F	Community participation & volunteerism	Do something for your community and everyone benefits. Love life
PP	Echo	Echo is a positive resource - suggests possibility for connection, involvement
S	Echo	Echo support publishing, journalism training
S	Learning	Education and training through RTC eg small business, farming
PP	Support and connections	Ensure satellite communities (eg Green Gully) have input into future plans
C	Non sporting	Entertainment for young people, leisure, fitness, Racecourse location
S	How we live, development	Farmland around town vital, esp if communities need to rethink food growing
PP	Learning	Free tuition to everyone who wants to use Internet
PP	How we live, development	Have a district and town boundary
PP	How we live, development	Have a revision of the planning scheme for Newstead

Appendices (cont') APPENDIX F: Consultation results – full listing

Source	Theme	Community Life
PP	How we live, development	Heritage issues and overlays - more support and info, options
F	Support and connections	Historical society/cemetery. Community market
S	How we live, development	Housing dev't that doesn't detract from the sense of space (not cheek by jowl)
PP	How we live, development	How do we have the conversation as a community? About development
PP	Support and connections	Improve ways to find out about things
PP	How we live, development	Infill building on vacant lots in township before spreading out
PP	Support and connections	Influx of new people saviour for area (in past and now)
PP	How we live, development	Integrated community plan - influence urban overlay - connect projects to special family
PP	Leadership & mentoring	Involvement in leadership programs - look outside our town for ideas
PP	How we live, development	Irrevocable landscape changes as dev't trees
C	How we live, development	Keep large house blocks, no high density
S	How we live, development	Keep the mix of land use - farm,nature, residence
PP	Support and connections	Keeping an eye on single, older isolated residents
PP	Support and connections	Keeping older community members in touch
PP	Support and connections	Know your dog, know you....
C	Leadership & mentoring	Leadership/mentoring training for 16-25 year olds staying in the area
PP	Learning	Learning circles approach to education, sharing information
PP	How we live, development	Like it as it is.... Doesn't need development
S	How we live, development	Maintain land use variety - how to manage marginal rural land with declining profitability, aging population, planning restraint
S	Support and connections	Maintaining community optimism and morale - participatiing engagement aound change - positivity about the future
PP	Celebration	Many small groups, activities bring people together

Source	Theme	Community Life
PP	Support and connections	Meet people through art and dog
C	Celebration	Mens Shed...Grant
F	Community participation & volunteerism	Mentoring for generational change in clubs, services, volunteering etc
K	Sport	Mini-bike park
PP	How we live, development	Minimise or limit dev't on west of river
FB	How we live, development	Moderate heritage restrictions - eg external painting
PP	How we live, development	More green spaces
S	Support and connections	More connections within community, respect, care, consideration for people and place
B	Support and connections	More hugs and kisses on the street
S	Non sporting	More intergenerational activities and groups - mental health
		More men
B	Sport	More sporting clubs
FB	Non sporting	NAPE revival
PP	Support and connections	Neighbour mentoring service (Neighbourhood dispute mediatio service)
PP	Support and connections	Neighbourly connection through street Xmas drinks, garage sales et
PP	Support and connections	Neighbour mediation
PP	Newcomers	New residents kit
C	Celebration	New Years eve celebration
PP	Newcomers	Newcomers - "speed dating" idea for groups to introduce themselves to community
PP	Newcomers	Newcomers - introduction, info on the community
C	Newcomers	Newcomers get together
K	Celebration	Newstead Day - 15th June
PP	How we live, development	No Macdonalds
S	How we live, development	No tips, industrial dev't esp on farmland
PP	Noise	Noise abatement - dogs, motobikes
S	Noise	Noise and through town heavy transport - amenity, safety

Appendices (cont') APPENDIX F: Consultation results – full listing

Source	Theme	Community Life
PP	Non sporting	Non-sporting activities for teenagers - at pool?
C	How we live, development	Open spaces, farm land, big house blocks
PP	Sport	Physical exercise sessions - 6:30am Bank funded
S	How we live, development	Planning - the bottom of Panmure St is overcrowded
S	How we live, development	Planning issues transparent and involve locals in their dev't
K	Sport	Pony club
K	Sport	Pony club
K	Sport	Pony club
C	How we live, development	Population growth - develop strategy to cope with social absorption
S	How we live, development	Protect district from over dev't - water, aesthetics, liveability, amenit
PP	How we live, development	Protect watershed area (Cemetery Rd) - keep dev't to north side
B	Noise	Protecting peacefulness
PP	Leadership & mentoring	Recording the stories of our elders Elsie B, Jim, Janet, Dorothy, Maureen, June
FB	Newcomers	reduce isolation
PP	How we live, development	Relying on the spirit of community
PP	Support and connections	Retaining the X factor -the eccentricity, the "individual" individuals
FB	learning	Rocket Science revival
K	Sport	Rugby team
PP	Community participation & volunteerism	Shared over-seeing committee/s for community groups eg one c'tee oversees all recreation groups
PP	Community participation & volunteerism	Skills audit of community - listed on Newstead website
PP	Support and connections	Small enough to retain a heart connection with people here
K	Sport	Soccer team
K	Sport	Soccer team
K	Sport	Soccer team
K	Sport	Soccer team
FB	Celebration	Social gathering place - other than pubs
S	Sport	Social tennis
F	Sport	Sport facilities
C	Learning	Stephanie Alexander food program for after school care

Source	Theme	Community Life
S	Community participation & volunteerism	Strong volunteer groups to keep community spirit strong. Rates spent on maintaining what we have (levee bank, road, drains, trees)
PP	How we live, development	Subdivision in 'poorer' areas (of bushland)
C	Non sporting	Supervised activities for teenagers (12-17) - program with games
S	Support and connections	Support for carers
PP	Noise	The night sky - important not to lose
PP	How we live, development	The space and (mental) isolation to create
K	Non sporting	Theatre
S	How we live, development	Town spaces that encourage people bump into one another
K	Celebration	Town wide Christmas decorations, giant Xmas tree, town party
PP	Community participation & volunteerism	Traditional orgs and groups managing changed demographics eg farmers, older locals
PP	How we live, development	Use local knowledge and skills in planning and design, infrastructure, projects
PP	Support and connections	Use more - FM radio, Faceoook
2021	Community participation & volunteerism	Volunteer helper information exchange
F	Community participation & volunteerism	Volunteer labour available
PP	Community participation & volunteerism	Volunteer registry
PP	Community participation & volunteerism	Volunteer registry
F	Community participation & volunteerism	Volunteering
S	Community participation & volunteerism	Volunteerism - spreading the load, avoiding exploitation, balancing positives
FB	Newcomers	Welcome pack - essential numbers, contacts, morning tea,
C	Newcomers	Welcoming kit for newcomers

Appendices (cont') APPENDIX F: Consultation results – full listing

Source	Theme	Bricks and Mortar
Blog	Existing community facilities	A better park
K	Play facilities	A massive climbing frame at the park
S	Public Infrastructure	A village square with restful places and shady trees
PP	Public Infrastructure	A water bottle free town (bubble taps)
K	Play facilities	Abseiling wall
PP	New Facilities	Accommodation for retired people. Ecological housing, coop? permaculture
PP	Play facilities	Activities for 13-15 yo kids, skate park, BMX track
2021	Public Infrastructure	Affordable social housing
K	Play facilities	An obstacle course
Echo	Public & Road Safety	Angle parking at Post Office, it is elsewhere in town, present access physically challenge
K	Play facilities	Army tank playground
S	Public Infrastructure	Artists studio & gallery hubspace/ small or tiny business incubator/ manufacture
S	Preserving/ Renewing old buildings	Arts gallery precinct to a showcase, tourism, local talent
C	Preserving/ Renewing old buildings	Arts precinct at Railway Station
K	Existing Community Facilities	BBQ area at Racecourse
K	Pool	Better change room at the pool
K	Pool	Better fence @ the pool
K	Pool	Better public toilets
K	Public & Road Safety	Better roads
Blog	Pool	Bigger water slide
PP	Public Infrastructure	Broadband coverage
S	Fire & Flood	Bushfire escape routes on Code Red Days
Blog	Preserving/ Renewing old buildings	Business, office, studio hub at station
K	Existing Community Facilities	Canteen for the school

Source	Theme	Bricks and Mortar
PP	Public & Road Safety	Cars & people - slow down traffic - have a primary traffic route, & secondary route which is Pedestrian Priority eg Canrobert St
K	Play facilities	Changing rooms @ netball
PP	Fire & Flood	Community fire protection/plan - personal responsibility focus
K	Play facilities	Cricket nets - roof to stop balls escaping
K	Pool	Cricket pitch at swimmin gpool
S	Preserving/ Renewing old buildings	Curatorial services & art gallery management
PP	Preserving/ Renewing old buildings	Developing the railway station - trains, U3A, art classes, point of contact for artists
K	Pool	Diving board at swimming pool
K	Pool	Diving board one meter off water
PP	Existing Community Facilities	Dogs off-leash area to run and socialise, owners too
Echo	Public & Road Safety	Double parallel lines through town, no passing
PP	Public & Road Safety	Dust abatement on dirt roads
Echo	Public & Road Safety	Extend 50k/h limit beyond school
Echo	Public & Road Safety	Extend permanent protective edging for main st trees to incorporate pedestrian islands for crossing
PP	Fire & Flood	Fire overlay for Newstead
PP	Fire & Flood	Fire risk safer place
PP	Fire & Flood	Fire risk which way to leave/go?
PP	Fire & Flood	Fireplan for Newstead & surrounds that incorporates risk, ecology, the things we love, without damaging
C	Public & Road Safety	Flashing lights for school crossing
FB	Fire & Flood	Flood levels - reduce how?
PP	Public & Road Safety	Grading of gravel roads - badly done. Material, roads constantly widening, camber
Blog	Public & Road Safety	Heavy trucking & through traffic speed limit
S	Public Infrastructure	Housing development that does not detract from the sense of space - not cheek by jowl
S	Public & Road Safety	Improved roads

Appendices (cont') APPENDIX F: Consultation results – full listing

Source	Theme	Bricks and Mortar
PP	Public & Road Safety	increased demands on Post Office - extra boxes, approp car parking that suits location
S	Existing Community Facilities	Keep primary school going strong. If families stay in town, economy & social fabric grows.
PP	Fire and flood	Lack of river creek crossing for CFA tankers
S	Preserving/ Renewing old buildings	Large art space, gallery
PP	Fire & Flood	Levee bank - some fire protection protection - town a firefighting challenge
PP	Fire & Flood	Little protection in Newstead in case of fire from NW or wind change for north Newstead town
S	Existing Community Facilities	Local primary school provides strong economic contribution to Newstead. Keep school vibrant = keep families in town
PP	Fire & Flood	Local response to floods, local disasters (local disaster ready)
Echo	Public & Road Safety	Long term plan for heavy vehicle bypass around town
PP	Preserving/ Renewing old buildings	Lot 19 idea at r'way station - exhibitions, opera. multilayered ...
Echo	Public & Road Safety	Marked pedestrian crossings at school, main st cbd
K	Play facilities	More decorations on the Pirate Ship - tables and chairs
C	Play facilities	More facilities in the park near town centre
PP	Public & Road Safety	More street lighting - solar powered? lower wattage
S	Existing Community Facilities	Multi-use facilities - consult with Newstead Live, religious walkers, weekly users, locals
PP	Public Infrastructure	Natural gas
Echo	Public Infrastructure	NBN - C'maine, M'borough, Maldon are being connected - why not us?
C	Pool	Newstead pool open every day
PP	Preserving/ Renewing old buildings	Newstead Railway restoration and renewal

Source	Theme	Bricks and Mortar
PP	Preserving/ Renewing old buildings	Railway - artists studios, gallery, sculptural competition to attract international arists,landscaping
PP	Preserving/ Renewing old buildings	railway - function centre or cafe, performance space, film nights, sculptural walk to town
S	Preserving/ Renewing old buildings	Railway Station - could have a variety of uses
PP	Preserving/ Renewing old buildings	Railway station - pool funds for equipment - eg welding, leatherwork, teach kids, mentor
PP	Preserving/ Renewing old buildings	Railway station as a focus for kids & families - a village square just lacking people
S	Preserving/ Renewing old buildings	Railway Station as community hub
S	Preserving/ Renewing old buildings	Railway Station precinct - possible employment generation
C	Preserving/ Renewing old buildings	Restore, preserve railway station. Tourism opp - link to arts trail
C	Public & Road Safety	No speed - no dust signs
K	Play facilities	Park with trees & swings
C	Public & Road Safety	Pedestrian crossing at bus stop
Blog	Public & Road Safety	Permanent speed cameras in town
PP	Play facilities	Plaground at Rotunda Park
K	Play facilities	Playground at the oval
FB	Existing Community Facilities	Pool a social hub, keep volunteer run
C	Pool	Pool open earlier than December
S	Public Infrastructure	Power lines underground
PP	Pool	Pre-school and pool attract families from other places
S	Preserving/ Renewing old buildings	Preserve and care for our lovely old buildings
S	Existing Community Facilities	Primary School attracting students
C	Play facilities	Public toilet at Pirate Ship
C	Play facilities	Pirate Ship, safe road crossing
FB	Existing Community Facilities	Racecourse rails - renovate
Blog	Public & Road Safety	Rail between the footpath & road on the bridge

Appendices (cont') APPENDIX F: Consultation results – full listing

Source	Theme	Bricks and Mortar
Blog	Fire & Flood	Raise the levee bank
PP	Existing Community Facilities	Recreation Reserve - does new plan incorporate existing activities, events?
S	Existing Community Facilities	Recreation Reserve upgrade
C	Public & Road Safety	Reduce speed through town
Echo	Public & Road Safety	Reducing speed to 40kn/h through town
PP	Public & Road Safety	Safe street crossing in high st
K	Public & Road Safety	Safer bike riding on bridge
PP	Preserving/ Renewing old buildings	Safer place at Railway station? Fire resistant plants, demo garden
PP	Fire & Flood	Safer place for Newstead?
C	Public & Road Safety	Sealing the many gravel roads within Newstead residential areas
PP	Existing Community Facilities	Shire Depot used - petrol tank for mower fuel, grader for floods
Blog	Play facilities	Skate Park
Blog	Public & Road Safety	Slower speed signs on Hwy to Ballarat
PP	Public Infrastructure	Small affordable housing
Echo	New Facilities	Small retirement village
Blog	Play facilities	Soccer pitch
FB	Public Infrastructure	Social gathering place other than pubs
PP	New Facilities	Solar powered retirement village
K	Existing Community Facilities	Solar powered swirly water slide at pool x5
K	Pool	Spa
K	Pool	Spa
K	Pool	Spa
Blog	Public & Road Safety	Speed humps on Panmure St or a 'kids' sign
Blog	Pool	Squad swimming
PP	Public Infrastructure	Standpipes that operate - at Railway Hotel, RTC
S	New Facilities	State-of-the-art sustainable public building
S	Public & Road Safety	Street lights
Blog	Public & Road Safety	Street lights
Blog	Public & Road Safety	Stricter laws for trucks passing through town
K	Pool	Swimming pool at the school

Source	Theme	Bricks and Mortar
K	Pool	Swimming pool fix fence
K	Pool	Swimming pool fix fence
K	Play facilities	Tennis/netball court shade
PP	Existing Community Facilities	Toilets at park on railway side of river
C	Play facilities	Pirate Playground toilets
C	Play facilities	Toilet at Newstead Park (Pirate Ship)
K	Play facilities	Toilets at the Newstead Playground
FB	Public Infrastructure	Tourist map - new improved version
PP	Public Infrastructure	Train service
PP	Existing Community Facilities	Upgrade public toilets, can't cope with events etc - locations
PP	Preserving/ Renewing old buildings	Visit other stations on community bus to see what other towns are doing - Talbot, Bealiba, Carisbrook, Coleraine
Blog	Pool	Warm showers at pool
Blog	Pool	Warm showers at pool
Blog	Pool	Warm showers at pool
K	Pool	Water slide at swim pool
K	Pool	Water slide at swim pool
K	Pool	Water slide at swim pool
K	Pool	Water slide at swim pool
K	Pool	Water slide at swim pool
K	Pool	Water slide at swim pool
K	Pool	Water slide at swim pool
K	Pool	Water slide at swim pool
C	Play facilities	Wave machine at Cairn Curran Reservoir

APPENDIX G: Community planning program



COMMUNITY EVENT, SUNDAY 3RD MARCH 2013 AT THE NEWSTEAD COMMUNITY CENTRE Event structure and Running Sheet

Purpose of the event

Getting the Newstead community together to discuss our future

Goals

1. Identify priorities for the community to focus on over the next 1, 3 and 10 years
2. Encourage community participation and involvement in projects that will sustain us into the future
3. Recognise and building connections and leadership

Running Sheet

Note: We need volunteers to help set up decorations, hall, catering on the day or day before, PA, powerpoint gear etc. Please let Janet or I know if you can help and when you might be available.

Time	Activity	Notes
11.00am	Gather and Welcome to Country in the area at the rear of the Community Centre Marcus the musician is playing Registration Table (Bronwyn)	Name tags
11.10am	Welcome to Country	Neil Boyack
11.10am	Where are we on the Map?	Horse and Bob Clutterbuck have agreed to develop map on drop sheets Janet to describe activity
11.25am	Move inside	Historical photograph display (Gail Leech) Slide show – images of Newstead as backdrop (Dave Stratton. and Gail to develop)
11.30am	Telling our Story	

Time	Activity	Notes
	<p>THE STORIES</p> <p>Monique Kerr (Kate Tucker to contact)</p> <p>Newstead Railway Station – Peter Kerr (GP)</p> <p>Newstead Swimming Pool – Sue Pollard(GP)</p> <p>CFA – Doug Richardson (GP)</p> <p>Loddon River – Patrick Kavanagh (GP)</p> <p>Agriculture – Julie Butler (JB)</p> <p>Business – Peter Moloney, Listening Earth, Darren Gervasoni/ Newstead IGA (JB)</p> <p>Arts – Belinda Prest/Julie Patey (JB)</p> <p>RTC – Suzan Redlande (GP)</p> <p>Racecourse – Rob Sewell/Vanessa Boyack/Willo? (GP)</p>	<p>This session will involve a series of short vignettes from local people to represent the diversity and richness of community life. Each story will be ~ 2 minutes and will be linked to the key themes/ideas that have been identified. People will be briefed. This session can also help underscore the values/elements that make Newstead special</p>
12 noon	<p>Community Consultation – the results so far</p> <p>The process – what we did (Janet Barker) ... 5 min</p> <p>Summary of findings and key themes (Kate Tucker and Dave Stratton) ... 15min</p> <p>Open discussion ... 10 min</p>	<p>Brief presentations designed to:</p> <p>Summarise the feedback from community consultation, including the process, data etc</p> <p>Highlight the key themes that have been identified</p> <p>Provide a link to what happens next on the day</p> <p>Allow for some open discussion, Q & A</p>
12.30pm	Lunch	<p>Theme tables are setup with distilled ideas (as dot points) plus primary data as a backdrop</p> <p>Participants encouraged to mingle, discuss the ideas, add additional ideas etc over lunch</p>
1.15pm	<p>THEME DISCUSSIONS</p> <p>3 short, snappy sessions of 20 min each (including changeover) on the following overarching themes:</p> <p>Open Spaces</p> <p>Built Environment</p> <p>Economy</p> <p>Community Life</p> <p>Services and Access</p> <p>Young People</p> <p>Other – open discussion</p> <p>Facilitators: Bronwyn Smith, Chris Johnston, Arn Thoring, Ros Hart, Kate Tucker, Dave Stratton, Phoebe Snep</p> <p>Scribes: Janet Trudgeon, Nick Hudson, Karly Smith etc</p>	<p>Participants will choose three themes of interest and rotate to each group facilitator and scribe for each theme</p> <p>Three focus questions for each workshop:</p> <p>What is your reaction to the ideas presented here?</p> <p>What have we missed?</p> <p>What so we need to do to progress these ideas?</p>
2.15pm	<p>Workshop Feedback</p> <p>Brief report back from facilitators/scribes on each theme – 3 minutes each to be followed by open discussion</p>	
2.45pm	Afternoon Tea	Quiz winner announced

Time	Activity	Notes
3.00pm	<p>Prioritisation and commitment</p> <p>Participants will be asked to identify:</p> <p>What they see as the priority ideas/projects/areas</p> <p>Participants will be asked to identify which of the ideas etc they would like to lead/contribute to</p>	<p>Have a sign up list for participants indicate interest for specific projects/ideas and contact details – this could be offered prior to lunch, afternoon tea and at the end.</p>
3.15	Newstead Primary School Presentation	Isabel, Lincoln and Ben
3.25	Next steps and close	<p>Articulate what will happen with the information collected today</p> <p>Describe process for drafting the Plan and how feedback on the draft will be sought. How the Plan will be finalised</p>

APPENDIX H: Assessment approach for ideas and suggestions

Prepared by Ray Culvenor
4th May 2013

PURPOSE

This note outlines one approach to help assess the ideas and suggestions gathered during the preliminary phase of preparing a community plan for Newstead.

The approach revolves around a cross-classification matrix showing **town needs** versus **town resources**.

(*Note that this approach is in its early exploration phase and, at the time of writing, has not been endorsed or 'work-shopped' by the team preparing the Newstead Community Plan.)

THE TOWN NEEDS VERSUS TOWN RESOURCES MATRIX

Various views on town needs exist, but for the approach being developed and tested in this case, Maslow's hierarchy of human needs was taken as a starting point. The main modification was the use of 'Employment and/or Income' as a separate basic essential town need in its own right.

A hierarchy of town needs should help assess priorities. For example, unless matters can be attended to in parallel, then efforts should be applied to safety needs before attention is turned to 'higher' needs.

Town resources were divided into four groups, each having a number of sub-groups.

The current preliminary version of the matrix is shown below, together with the set of resource sub-groups.

The proposed matrix can be the basis for presenting and considering many aspects of the town plan. For example:

- What the town has by way of resources in relation to needs.
- Where the ideas and suggestions from the townsfolk fit and thus which areas are of greatest concern.
- Where areas of responsibility fit (e.g. which matrix intersections are the province of the Shire Council or State government? Which are mainly up to the townsfolk themselves?)
- Where are the gaps between needs and resources?

PRELIMINARY ANALYSIS

Action thus far:

- First attempt at describing what Newstead already has on the matrix. (See matrix below titled 'WHAT NEWSTEAD HAS ALREADY').
- Attempted to classify all ideas with the following:
 - The Resource Group that the idea relates to.
 - The Resource Subgroup that the idea relates to.
 - The Need that the idea relates to.
- Analysed results and counts, based on the above classifications.

OBSERVATIONS AND COMMENTS THUS FAR

1. Matrix below (titled 'COUNT OF IDEAS AND SUGGESTIONS') shows where the 610 ideas 'land' on the Needs/Resource matrix. Most significant intersections on the matrix are:
 - a) Built Infrastructure for Social Needs (164 Ideas/Concerns)
 - b) Service & Supplies for Social Needs (92 Ideas/Concerns)
 - c) Built Infrastructure for Esteem Needs (84 Ideas/Concerns)
 - d) Concerns relating to Safety – Fire, Flood, Roads (101 Ideas/Concerns)

2. Top idea frequencies (6 or more) by Resource Subgroup:

Idea Freq	Resource subgroup	
111	B3	Roads, bridges and paths
74	B2	Parks and reserves (incl. pool, playgrounds)
71	S01	Energy (power, gas, wood, vehicle fuel)
49	P3	Community spirit and volunteerism
21	B5	Public buildings incl. school
19	S23	Sporting clubs
13	N3	River
13	S10	Communications and internet
12	B4	Housing
12	P1	Employment and income
12	S25	Entertainment
11	B6	Retail and commercial buildings
11	S03	Protective services (Police, CFA, SES)
11	S04	Education & training (incl. pre-school)
6	N2	Land (incl. bush & agricultural)
6	S06	Care Services (incl. aged care)
6	S08	Water supply
6	S17	Rubbish removal & recycling
6	S19	Non-food retail

Appendices (cont') Appendix H: Assessment approach for ideas and suggestions

		CATEGORIES OF TOWN RESOURCES:			
TOWN NEEDS		PEOPLE	NATURAL RESOURCES	BUILT INFRASTRUCTURE	SERVICES & SUPPLIES
5	SELF-ACTUALISATION (opportunities for personal growth, self-awareness, creativity)				
4	ESTEEM (confidence, self-esteem, achievement, social recognition)				
3	SOCIAL NEEDS (family, friendship, community belongingness)				
2	SAFETY (shelter, power for warmth & light, security, protection from fire & flood)				
1	PHYSIOLOGICAL (air, water, food)				
BASIC ESSENTIAL	EMPLOYMENT AND/OR INCOME				
		PEOPLE	NATURAL RESOURCES	BUILT INFRASTRUCTURE	SERVICES & SUPPLIES
		P1 Employment & income	N1 Air	B1 Levee bank	S11 Energy (Power, Gas, Wood, Vehicle Fuel)
		P2 Skills	N2 Land (inc. bush & agricultural)	B2 Parks & Reserves (incl. pool, playground)	S12 Public Transport
		P3 Community spirit & volunteerism	N3 River	B3 Roads, Bridges & Paths	S13 Protective Services (Police, CFA, SES)
			N4 Wildlife	B4 Housing	S14 Education & Training (incl. Pre-school)
				B5 Public buildings (incl. school)	S15 Health services
				B6 Retail & Commercial buildings	S16 Care services (incl. aged care)
				B7 Churches	S17 Tourism services
					S18 Water supply
					S19 Sewerage
					S20 Communications & Internet
					S21 Postal services
					S22 Banking & Financial services
					S23 Other services
					S24 Library
					S25 Childcare
					S26 Food & Drink Retail (incl. cafes, pubs)
					S27 Household Removal & Recycling
					S28 Pastoral
					S29 Non-Food Retail
					S30 Building services
					S31 Repair & Maintenance services
					S32 Hair & Beauty services
					S33 Sporting clubs
					S34 Gymsnasiums, physioexercise, yoga
					S35 Entertainment

Appendices (cont') Appendix H: Assessment approach for ideas and suggestions

WHAT NEWSTEAD HAS ALREADY		CATEGORIES OF TOWN RESOURCES			
TOWN NEEDS		PEOPLE	NATURAL RESOURCES	BUILT INFRASTRUCTURE	SERVICES & SUPPLIES
5	SELF-ACTUALISATION (opportunities for personal growth, self-awareness, creativity)	Music, literature and art activities.		Performance and display spaces	RTC/library;
4	ESTEEM (confidence, self-esteem, achievement, social recognition)	Large number of community groups and functions; culture of volunteering	River; bush landscapes, wildlife		
3	SOCIAL NEEDS (family, friendship, community belongingness)	Sporting clubs; local government representation; Echo (town newsletter)		School; sporting, social and recreational facilities; reserves; churches.	RTC, Post Office, pubs, cafes
2	SAFETY (shelter, power for warmth & light, security, protection from fire & flood)	Safe community of good people.		Housing; roads and paths; levee bank;	Health services; aged care; CFA/SES; Police; electric power; bottled gas supplies; sewerage; communications & internet; rubbish removal.
1	PHYSIOLOGICAL (air, water, food).		Clean air		Water supply; food supplies; public transport;
BASIC ESSENTIAL	EMPLOYMENT AND/OR INCOME	People and various skills	Land for agriculture. Space for industrial land zoning?	Some retail and commercial buildings.	Almost all Newstead services and supplies are relevant to employment in some way.
(Draft 16Mar13)		PEOPLE	NATURAL RESOURCES	BUILT INFRASTRUCTURE	SERVICES & SUPPLIES

COUNT OF IDEAS AND SUGGESTIONS		PEOPLE	NATURAL RESOURCES	BUILT INFRASTRUCTURE	SERVICES & SUPPLIES
5	SELF-ACTUALISATION (opportunities for personal growth, self-awareness, creativity)	2		4	4
4	ESTEEM (confidence, self-esteem, achievement, social recognition)	21	14	84	22
3	SOCIAL NEEDS (family, friendship, community belongingness)	38	11	164	92
2	SAFETY (shelter, power for warmth & light, security, protection from fire & flood)		5	52	44
1	PHYSIOLOGICAL (air, water, food).		1		31
BASIC ESSENTIAL	EMPLOYMENT AND/OR INCOME	4			4
		PEOPLE	NATURAL RESOURCES	BUILT INFRASTRUCTURE	SERVICES & SUPPLIES

APPENDIX I: Newstead Echo insert sample

OUR TOWN, OUR SAY: DEVELOPING A COMMUNITY PLAN FOR NEWSTEAD

Previous Community Planning in Newstead

Community planning projects and Progress Associations made the news back in the days of the original Newstead Echo. We've had a history of community planning, including the Peter Kenyon workshops in the mid 1990s, the Newstead Forum, the Newstead Taskforce.

In May 2008 around 150 people gathered at the Newstead Community Centre for "Newstead 2021", to talk about their aspirations for the Newstead community, issues and concerns and ideas for the future. Specific projects were identified. Afterwards, several individuals and groups took action - limits on traffic speed through town, the pirate ship playground, the community garden, wireless network for the CBD, revegetation work along the Loddon River, a plan for street tree plantings - were just some of the outcomes. "Rocket Science" sessions at Dig cafe continued the conversations. Newstead 2021 was incorporated and set up to serve as an umbrella organisation, to support and assist other community projects. In June 2012, the Mount Alexander Shire organised "Focus on Newstead", a photography project and conversation, to follow on from the 2008 event. The project documented some of the people, projects and places important to our community. We want to build on previous activities to develop a 'whole of community' plan for Newstead, gathering input and ideas from as many people and groups as possible. In small rural towns, some things do stay the same. But even since our 2008 event, Newstead has seen development and many more new residents to town, rain and floods, an increase in large events (eg. car and bike rallies, Newstead Live!) and changes in services and businesses. Besides, there are always new ideas and perspectives on old issues.

Why Does Newstead Need a Community Plan?

A good plan will have broad community involvement and enable us to prepare and respond for the future. It will give us influence, a strong voice and a common frame of reference when working with local government and other authorities. It will also strengthen connections and communication across our community.

Mount Alexander Council is running the community planning process in other towns across the Shire. It's probably no surprise that Newstead wants to do it differently. Our community has a history of doing things for ourselves. We also believe that a locally produced plan has more chance of reflecting the needs and wishes of our diverse community. Council will be kept informed and involved throughout the process, but essentially it will be our plan.

WHAT IS A COMMUNITY PLAN?

It is a plan for the community's ideas, wishes, values and aspirations. It states who we are and what we value and how we would like our community to be in the future (2021 and beyond) and how we might get there.


It isn't a blueprint or a funding plan or a wish list of projects for Council to implement.

HOW WILL WE PRODUCE OUR PLAN?


We will be talking to as many individuals and groups as possible, leading up to the Community Planning Day on 17 February, 2013. We want to gather ideas, plans and information from right across the community, so that even if people can't attend the main planning day, they can have input to it. We will be attending community group meetings, holding specific gatherings, using The Echo and mailouts, setting up a website and using social media, as well as setting up a regular weekly time at the RTC for people to drop in for a chat. We also want to encourage dinner table conversations, afternoon teas or drinks with the neighbors, all sorts of activities to get Newstead talking and planning. We see community consultation as much more than just holding a public meeting.

OUR TOWN, OUR SAY: DEVELOPING A COMMUNITY PLAN FOR NEWSTEAD


WHAT DO YOU THINK ABOUT....




BRICKS AND MORTAR: What should Newstead's streetscapes and businesses look like in the future? What do we need that isn't here?




OPEN SPACES: What are our most valuable places and spaces and how should we protect them?




DOLLARS AND CENTS: What are the biggest contributors to our local economy and how can we strengthen it?



COMMUNITY: Do you feel well connected, are there ways we could improve connections?



YOU: Has your experience of living here changed and how? Are your day to day needs met by the community?



ONE BIG (or small) IDEA: What is one thing you'd like to see happen in Newstead and how?

STILL STUMPED? A few more prompts ...

- What are the three best things about Newstead?
- Why did you come here and have your views of the place changed? How?
- What do you see as the strengths of the Newstead community?
- What makes Newstead unique to other places?
- What's the three biggest concerns, challenges or needs for you at the moment?
- What's the three biggest concerns, challenges or needs for the Newstead community at the moment?

- What would you chuck, change, add or retain in Newstead?
- What businesses or services have you used in the last week/month here? What do you need to leave town for?
- What are our built needs and how do we respond to growing population?
- How would you like to see Newstead (function, look, sound, feel, smell) in another 3-5 years? 10 years? Another 20 years?
- How/What could you contribute to that picture? Who else could help and how?

SNAPSHOT OF NEWSTEAD 2011

Township Population 512
(268 males, 248 females)

District Population 290
(156 males, 130 females)

Median Age 50yrs

District families/households are slightly bigger than in town

We have 1.8 cars per household and 1.8 children per family

Our Average Weekly Income is \$675 - \$746

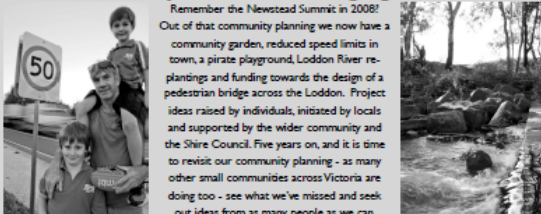
Average House Price \$298K
(Maldon \$257K, C'maine \$364K)

OUR TOWN, OUR SAY: DEVELOPING A COMMUNITY PLAN FOR NEWSTEAD

Please jot down any comments, answers or questions to these prompts here. Drop it off next time you are in town, at the RTC, PO or at any of the Community Planning "Gift Boxes" around Newstead. You can also go to our website www.newsteadplan.wordpress.com and leave a comment, idea, participate in a discussion, or complete the short survey there.

Why are we Planning again?

Remember the Newstead Summit in 2008? Out of that community planning we now have a community garden, reduced speed limits in town, a pirate playground, Loddon River replantings and funding towards the design of a pedestrian bridge across the Loddon. Project ideas raised by individuals, initiated by locals and supported by the wider community and the Shire Council. Five years on, and it is time to revisit our community planning - as many other small communities across Victoria are doing too - see what we've missed and seek out ideas from as many people as we can.



OUR TOWN, OUR SAY: DEVELOPING A COMMUNITY PLAN FOR NEWSTEAD

KEEP THIS DATE FREE!

Come along to our Community Planning Day and help us to create a plan for Newstead's future

Sun Feb 17th

Over the next couple of months we'd like to see Newstead's future being the talk of the town. The festive season provides a great opportunity to catch up for food, drink and conversation. Perhaps you might even talk about our town!

If you are interested in hosting a small get together, please contact us - we can provide some prompts and guidance. Or just start a conversation with family, friends and neighbours and let us know what you came up with.

We will be providing a draft plan to Mount Alexander Shire after the February 17th gathering and seeking final comments and input. We look forward to providing Council with a document which communicates our aspirations, ideas and intentions of Newstead's planning needs and gives us a stronger sense for the future.

Thanks to the Newstead RTC and Mayor Michael Redden for supporting the Community Planning Project.

So far we've talked with people at the Newstead Rotunda Market, Newstead CFA's Open Day and to many individuals. Just a few of the comments:

... the 'spirit' of the place ... friendly, tolerant, welcoming people ... natural gas - the pipeline runs right by us ... Rotunda Park is a fantastic resource (great acoustics!) needs refurbishing ... local flood response - is there one/who do we contact locally in disaster? ... walking paths and an off-main-road cycle track to Castlemaine ... skatepark at the old tennis court ... restoring the railway ... better broadband coverage ... fuel/petrol ... water bottle free town (have bubble taps) ... RTC and bank open on Saturday mornings ... recyclable depot in town (cans) ... a new residents kit with info about living in a rural area ... keeping an eye on our ageing folk especially those living alone ... the village feel and compact nature of the place ... retain farming land - limit small blocks ... a whole of landscape plan for fire planning and biodiversity ... a great Preschool (we travel from Daylesford) ...

Facebook?
www.facebook.com/NewsteadCommunityPlan

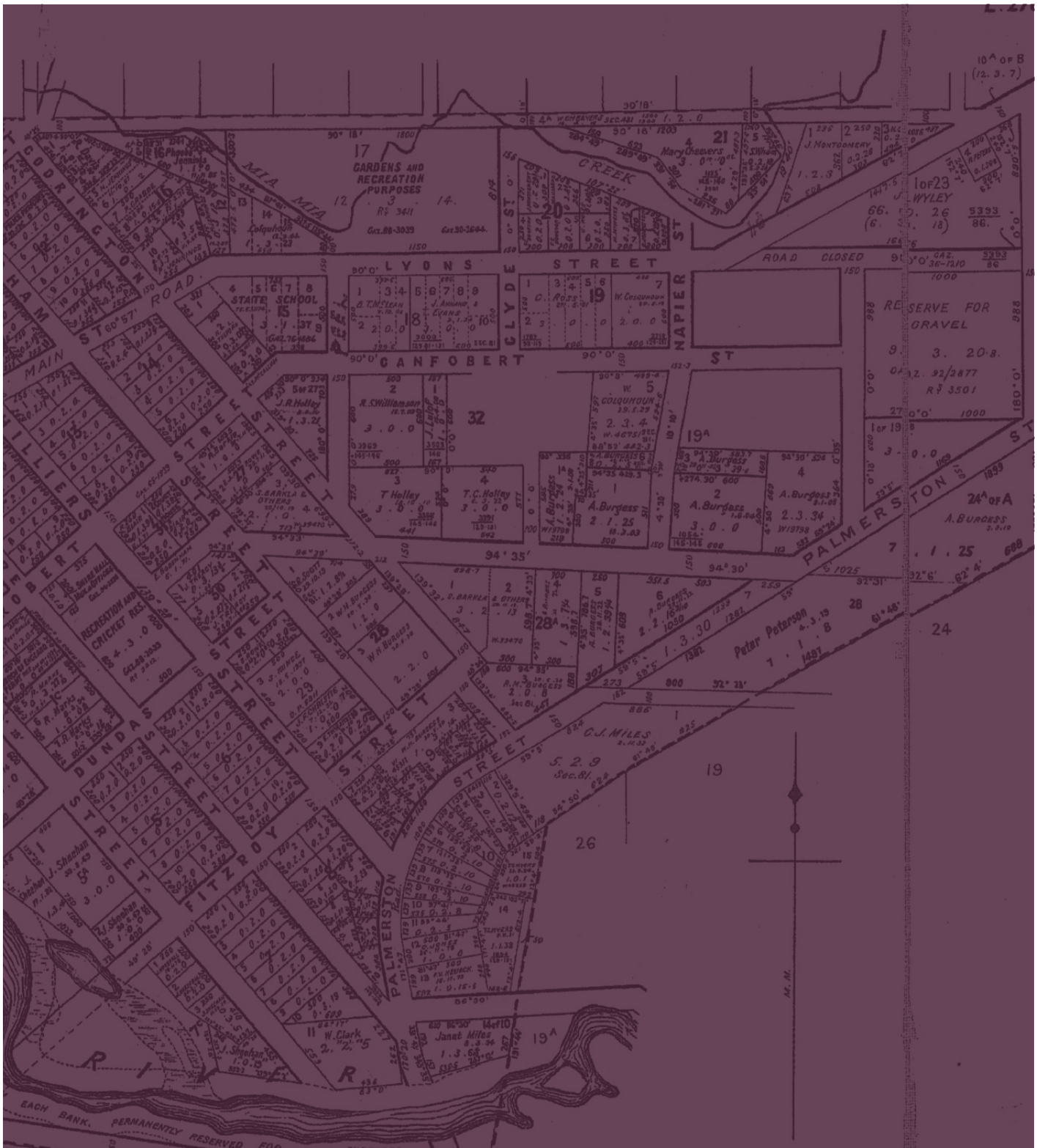
Twitter?
#NewsteadPlanning

Face to Face?
Janet Barker has been appointed to Coordinate the Community Planning Process and will be based at the Newstead RTC, 45 Lyons Street. Drop in for a chat (after 14/12) on Tuesdays 10-12 or Wednesdays 2-4 or contact her on 0439 003 469. Or contact anyone listed below.

WHO'S BEHIND THE COMMUNITY PLANNING FORUM?

We are a group of interested locals keen to plan a creative, vibrant and sustaining future for Newstead, including Genevieve Barlow, Julie Butler, Frances Cincotta, Don Culvenor, Gordon Dowell, Angela Down, Saide Gray, Nick Hudson, Ros Hunt, Danny McCain, Geoff Park, Lesley Philip, Michael Redden, Karly Smith, Ron Snep, Dave Stratton, Kate Tucker.

NOTES



Town of
NEWSTEAD
 Parish of Strangways
 COUNTY OF TALBOT

Scale, 8 Chains to 1 inch
 CAL. 61-510.

SEC. 3	SEC. 4	SEC. 5	SEC. 6	SEC. 6A	SEC. 7
W. IBBOTSON		J. SUTHERLAND	J. SUTHERLAND	D. INNES	A. CAMPBELL
W. ABERDEEN		W. STEWART	W. STEWART	W. JONES	G. SHIPTON
	J. MONKS	J. DAVIS	L. LANGSLOW	E. TELFER	G. BEARDS
W. IBBOTSON		P. SHYTHE	P. KENNEDY	A. JONES	J. DAY
			J. SMILLAN	C. KIRBY	
	W. MATTHEWS & S. BAKER		L. LANGSLOW	D. INNES	L. JONES & S. BEARD
W. GREEN	T. JONES	T. WHEAR	L. LANGSLOW	W. MENABB	J. DAY
	W. W. WILSON	P. SHYTHE	J. SUTHERLAND	T. JONES JR.	J. JENKINS
F. C. DONOVAN			P. JONES	P. JONES	J. DAY